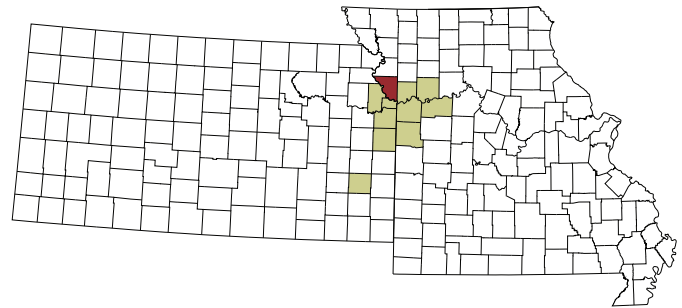


# HEALTH PROFILE | Platte County, Missouri

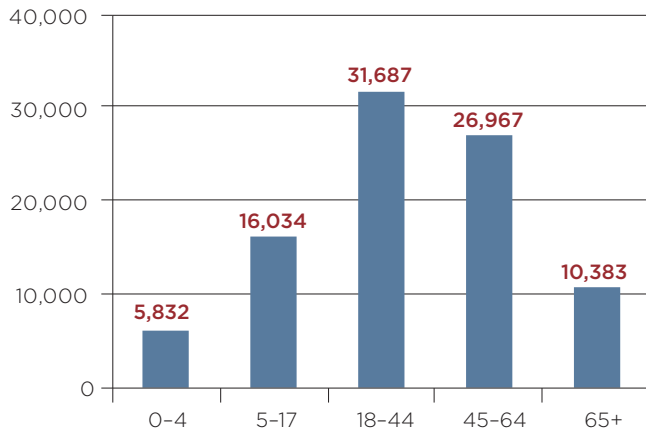
## QUICK FACTS

2011 Population: 90,903  
 Median Household Income: \$61,863  
 Poverty Rate: 6.0%  
 Unemployment Rate: 6.7%



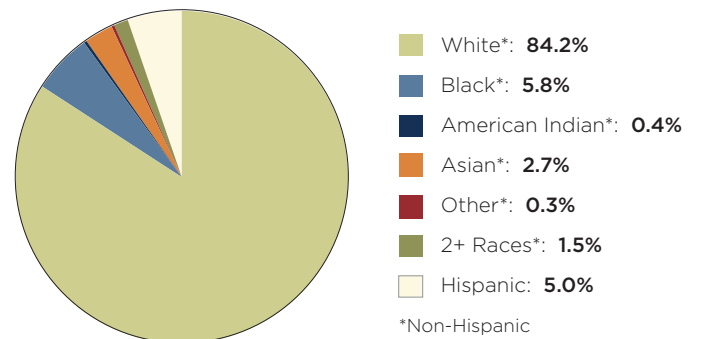
## Population by Age, 2011

Source: US Census Bureau, American Community Survey



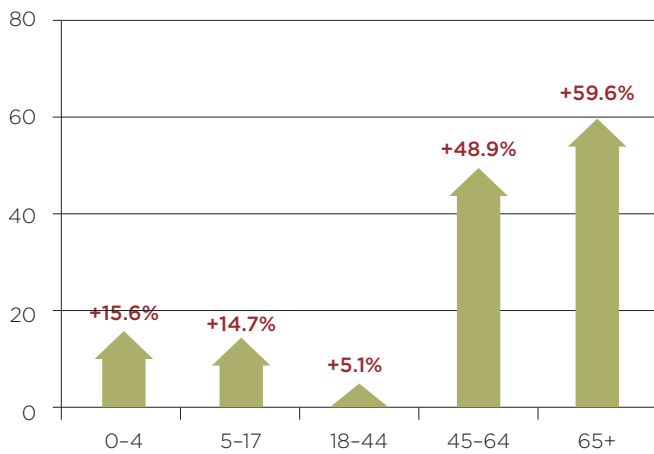
## Population by Race, 2011

Source: US Census Bureau, American Community Survey



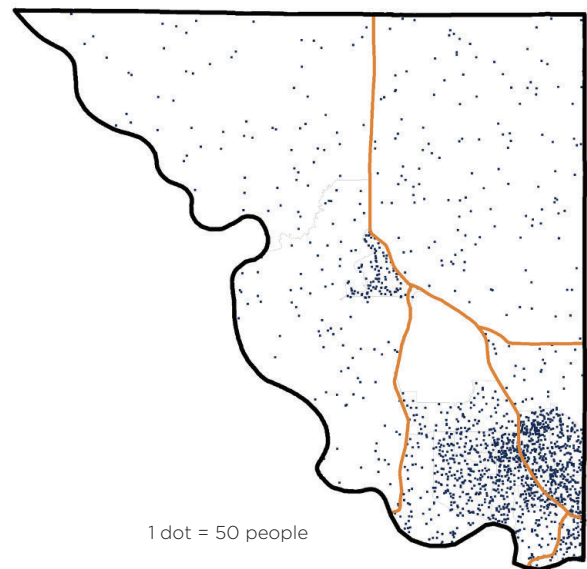
## Population Shift: Percent Change by Age, 2000-2011

Source: US Census Bureau, American Community Survey



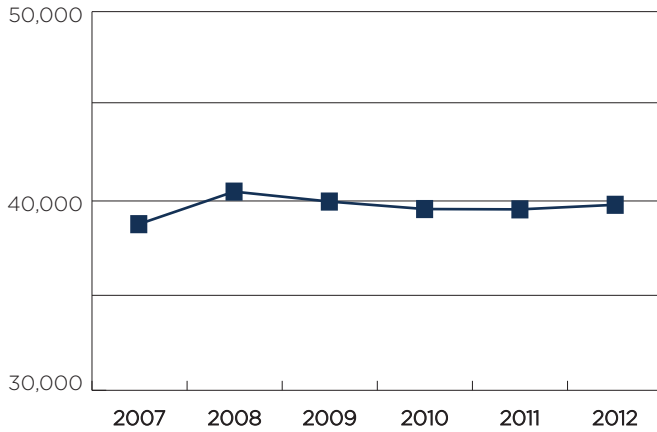
## Population Density

Source: US Census Bureau, American Community Survey



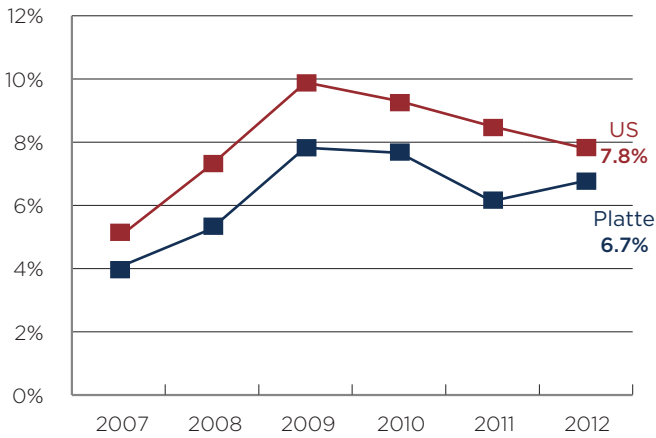
## Employment

Source: Bureau of Labor Statistics



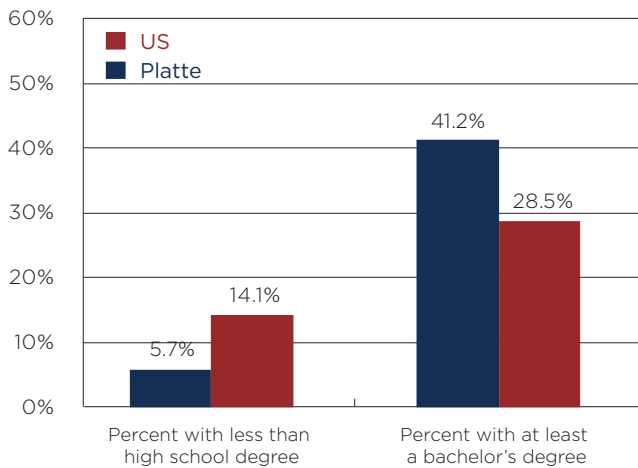
## Unemployment Rate

Source: Bureau of Labor Statistics



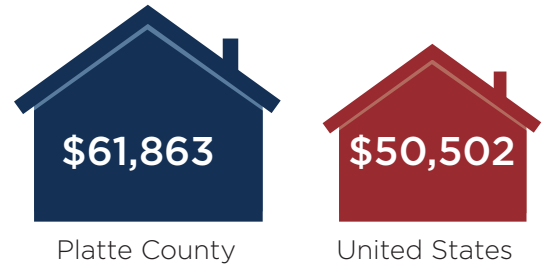
## Educational Attainment (Population age 25 and up)

Source: US Census Bureau, American Community Survey



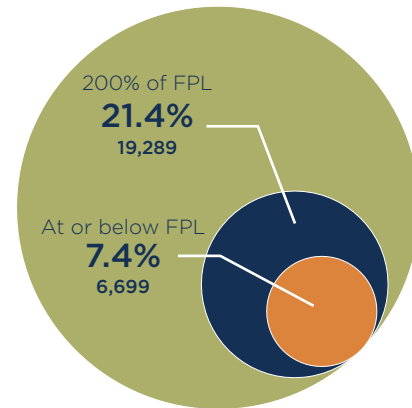
## Median Household Income

Source: US Census Bureau, American Community Survey



## People Living in Poverty

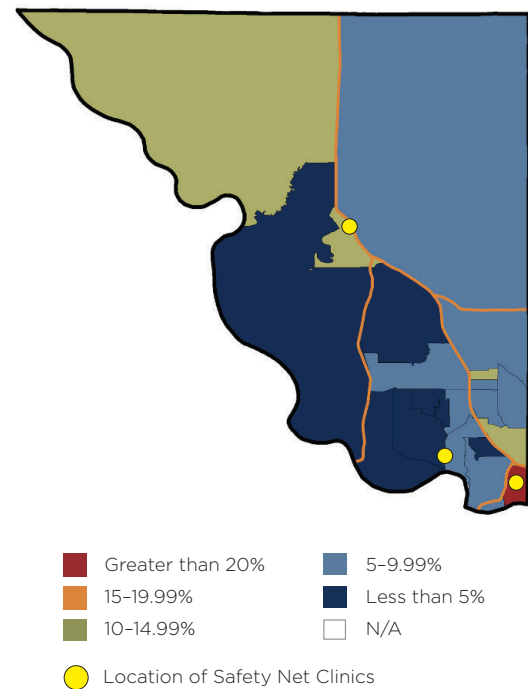
Source: US Census Bureau, American Community Survey



Federal Poverty Level (FPL) varies by household size. For four people (two adults and two related children), FPL is an annual income of \$23,050 or less; and 200% FPL is \$46,100 or less.

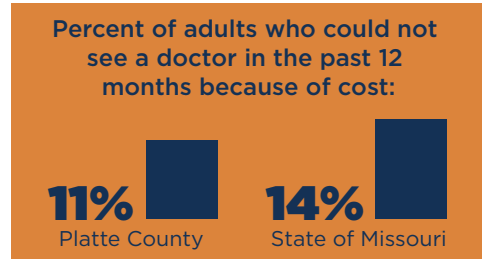
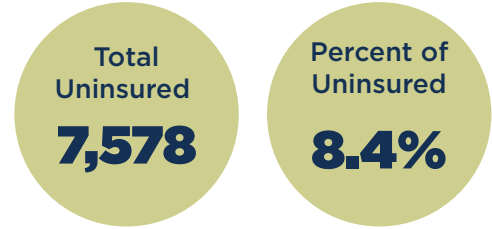
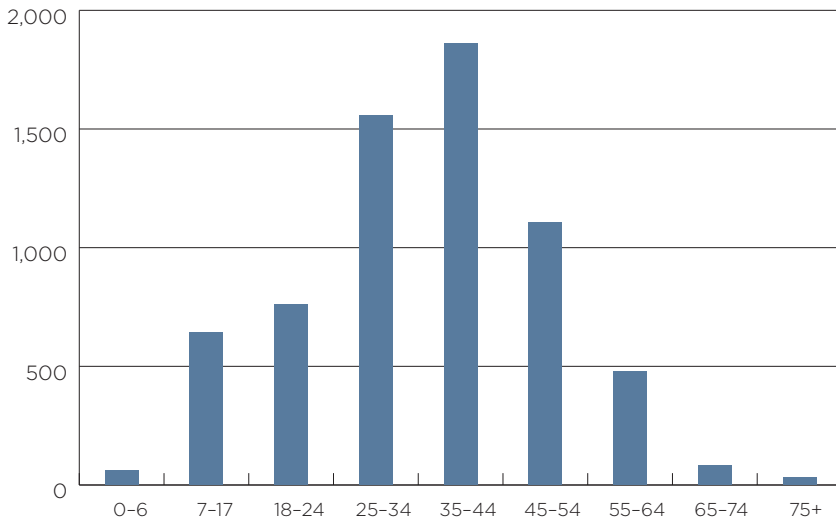
## Poverty by Census Tract

Source: US Census Bureau, American Community Survey



## Number of Uninsured by Age

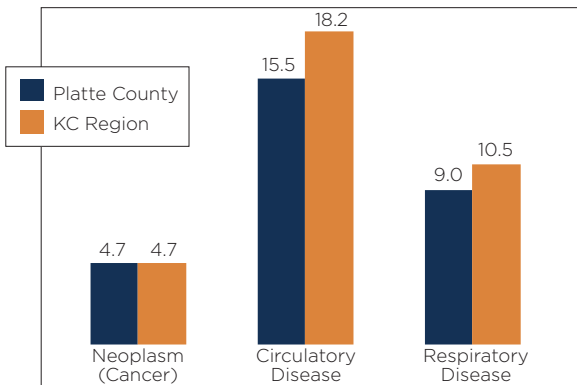
Source: US Census Bureau, American Community Survey



Source: County Health Rankings, Robert Wood Johnson Foundation

## Hospital Discharges per 1,000

Source: Missouri Department of Health and Senior Services (DHSS), Missouri Information for Community Assessment (MICA)



## Diabetes Incidence

Source: U.S. Centers for Disease Control, 2009

Percent of Platte County population age 20 and older diagnosed with diabetes:

**9%**

## Top 5 Causes of Death

Source: Missouri DHSS

Cancer	24.5%
Heart disease	23.2%
Chronic lower respiratory diseases	6.3%
Cerebrovascular disease (Stroke)	5.2%
Alzheimer's disease	4.9%

## Health Care Providers Per Capita

Source: HHS Area Resource File, 2010



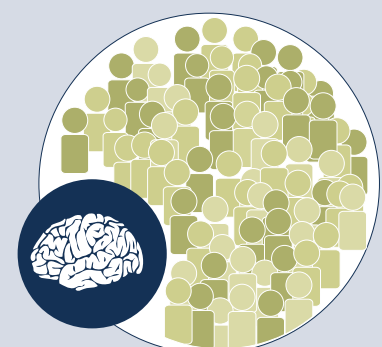
Primary Care Physicians

**1: 1,567**



Dentists

**1: 1,821**



Psychiatrists

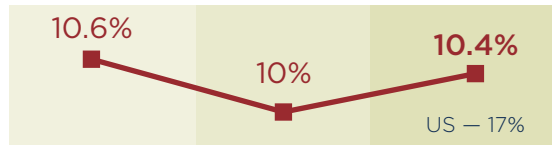
**1: 7,463**

## Health Indicators/Trends

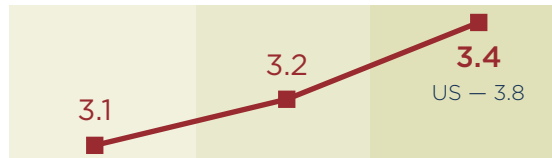
Source: Prenatal care data from Missouri DHSS; all others from County Health Rankings, Robert Wood Johnson Foundation



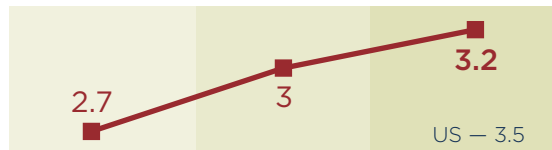
### Adults in poor or fair health



### Poor physical health days

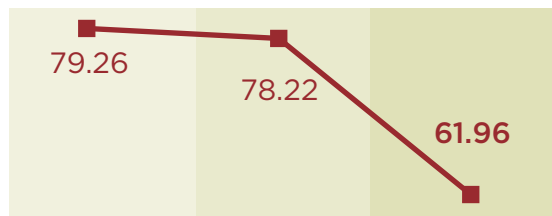


### Poor mental health days

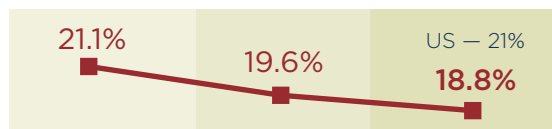


### Preventable hospital stays

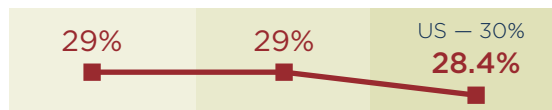
per 1,000 Medicare enrollees



### Adults who smoke



### Adults who are obese

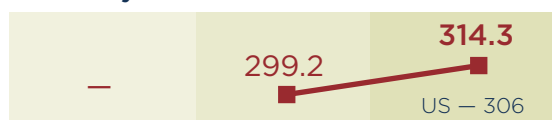


### Auto crash deaths

per 100,000



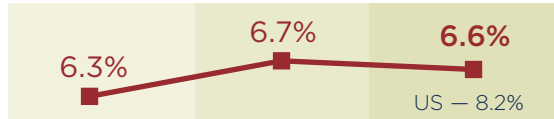
### Sexually Transmitted Infections rate



### Births to teen mothers

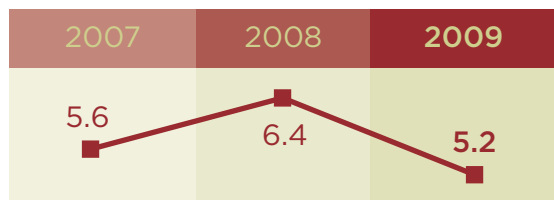


### Low birth-weight babies



### Inadequate prenatal care

per 100 births



## KEY COUNTY CONCERNS:

The projected increase in the county's older population will likely strain the health care system.

Total poor physical and mental health days for county residents are trending upwards.

While the county enjoys a higher-than-average median household income, almost 20,000 residents live below 200 percent of federal poverty level, and more than 7,500 are without health insurance.



[www.reachhealth.org](http://www.reachhealth.org) | 913-432-4196