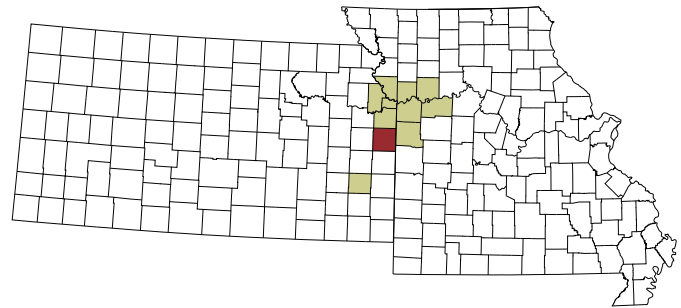


HEALTH PROFILE | Miami County, Kansas

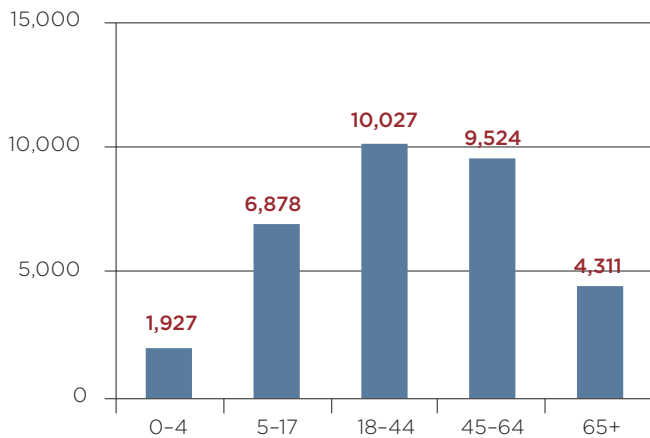
QUICK FACTS

2011 Population: 32,667
 Median Household Income: \$56,061
 Poverty Rate: 9.8%
 Unemployment Rate: 5.9%



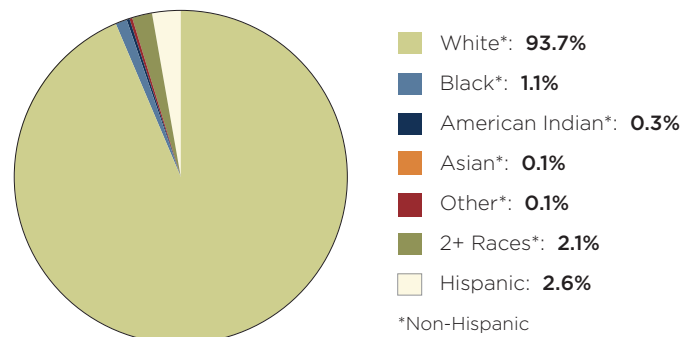
Population by Age, 2011

Source: US Census Bureau, American Community Survey



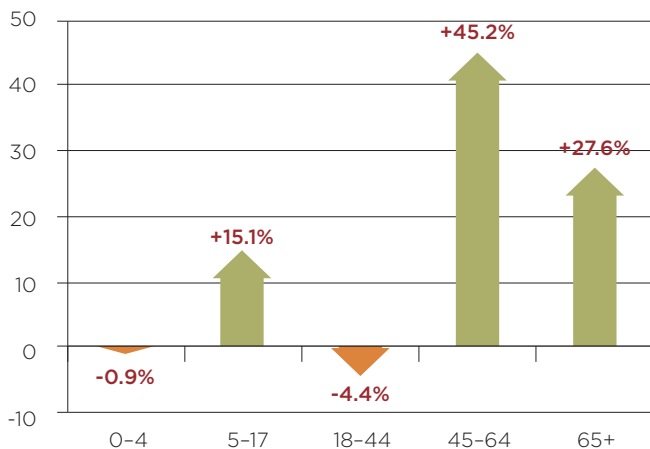
Population by Race, 2011

Source: US Census Bureau, American Community Survey



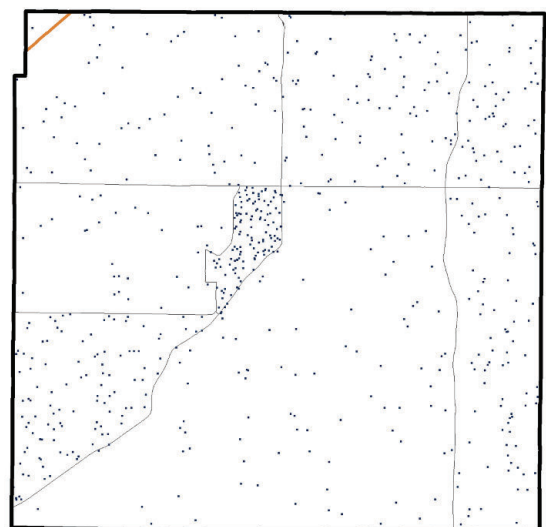
Population Shift: Percent Change by Age, 2000-2011

Source: US Census Bureau, American Community Survey



Population Density

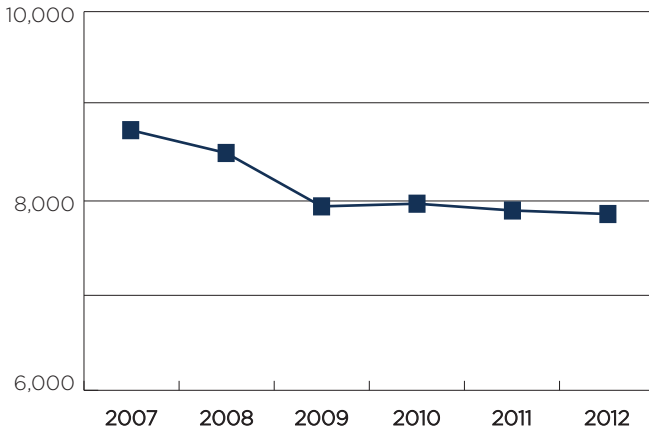
Source: US Census Bureau, American Community Survey



1 dot = 50 people

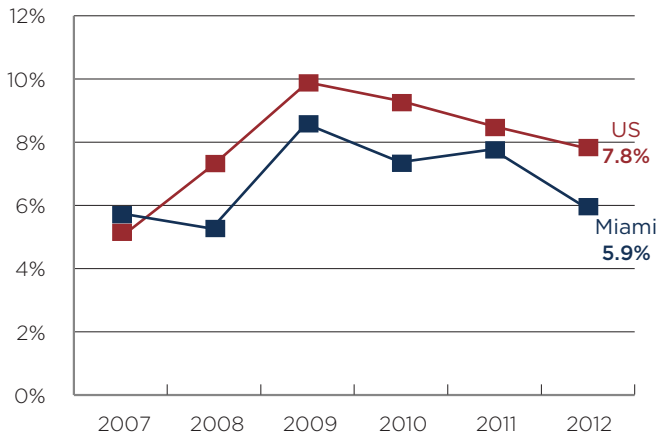
Employment

Source: Bureau of Labor Statistics



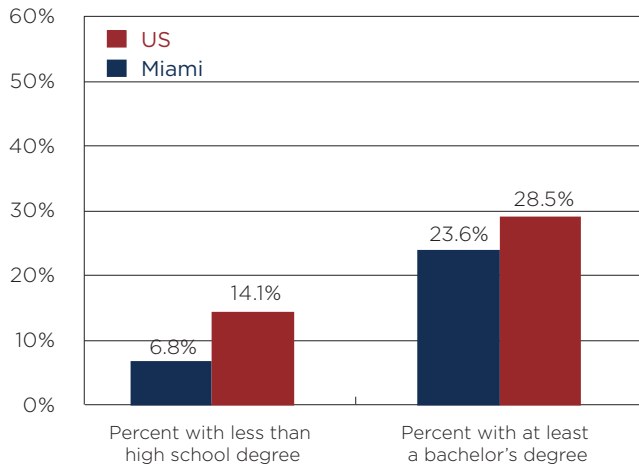
Unemployment Rate

Source: Bureau of Labor Statistics



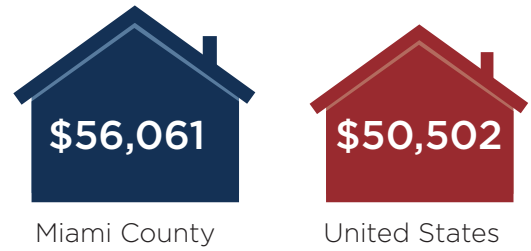
Educational Attainment (Population age 25 and up)

Source: US Census Bureau, American Community Survey



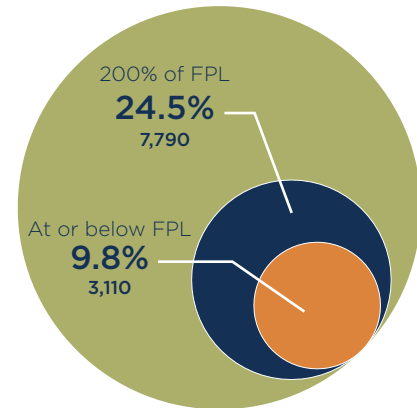
Median Household Income

Source: US Census Bureau, American Community Survey



People Living in Poverty

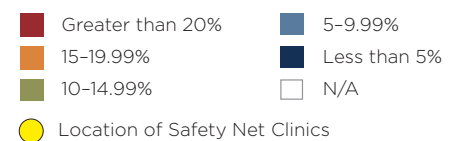
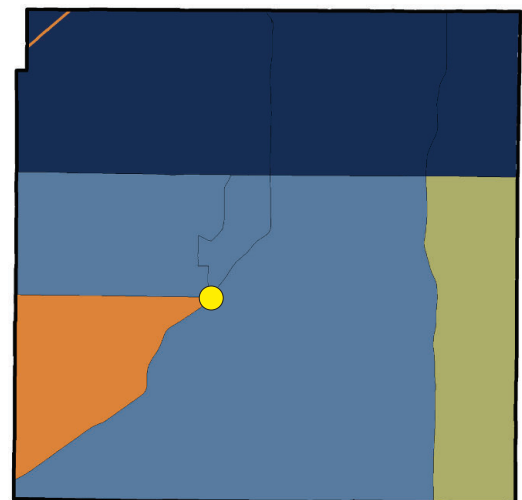
Source: US Census Bureau, American Community Survey



Federal Poverty Level (FPL) varies by household size. For four people (two adults and two related children), FPL is an annual income of \$23,050 or less; and 200% FPL is \$46,100 or less.

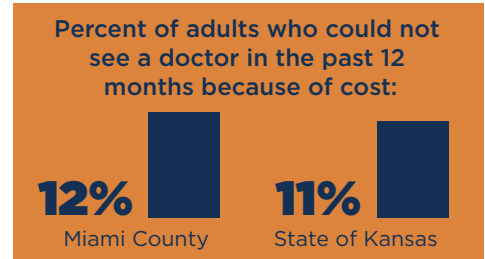
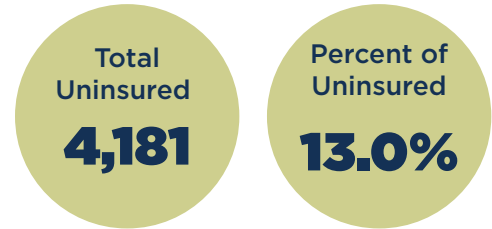
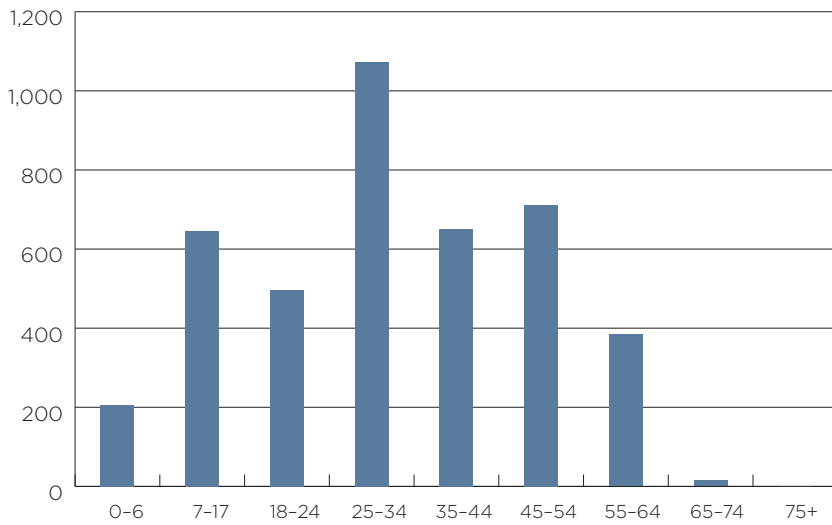
Poverty by Census Tract

Source: US Census Bureau, American Community Survey



Number of Uninsured by Age

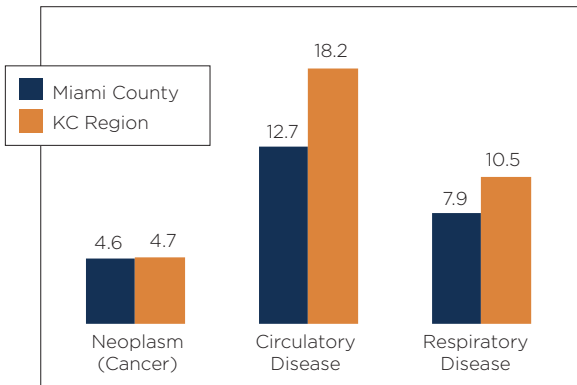
Source: US Census Bureau, American Community Survey



Source: County Health Rankings, Robert Wood Johnson Foundation

Hospital Discharges per 1,000

Source: Kansas Department of Health and Environment (KDHE), Kansas Information for Communities (KIC)



Diabetes Incidence

Source: U.S. Centers for Disease Control, 2009

Percent of Miami County population age 20 and older diagnosed with diabetes: **9%**

Top 5 Causes of Death

Source: KDHE

Heart disease	25.7%
Cancer	21.9%
Chronic lower respiratory diseases	6.4%
Cerebrovascular disease (Stroke)	5.0%
Motor Vehicle Accidents	2.5%

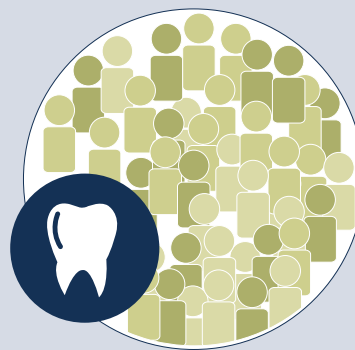
Health Care Providers Per Capita

Source: HHS Area Resource File, 2010



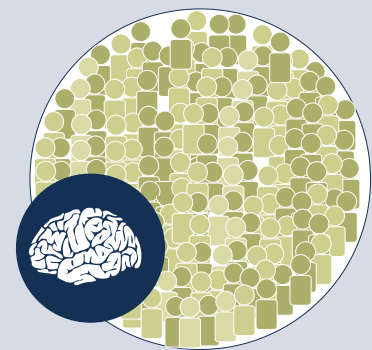
Primary Care Physicians

1: 2,188



Dentists

1: 4,098



Psychiatrists

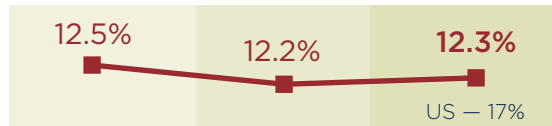
1: 16,393

Health Indicators/Trends

Source: Prenatal care data from KDHE; all others from County Health Rankings, Robert Wood Johnson Foundation



Adults in poor or fair health



Poor physical health days

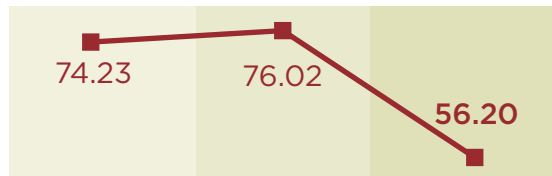


Poor mental health days

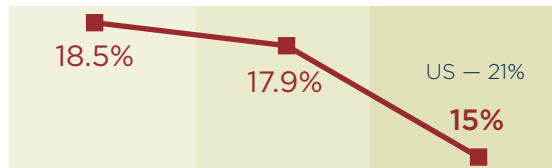


Preventable hospital stays

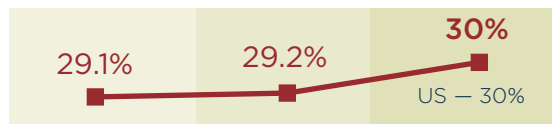
per 1,000 Medicare enrollees



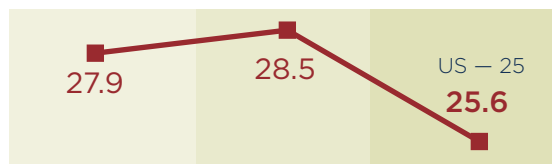
Adults who smoke



Adults who are obese



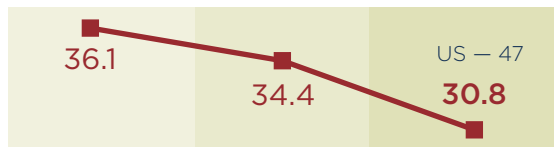
Auto crash deaths per 100,000



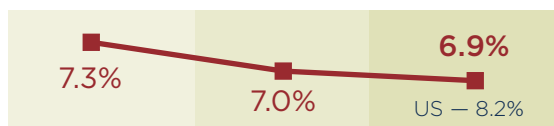
Sexually Transmitted Infections rate



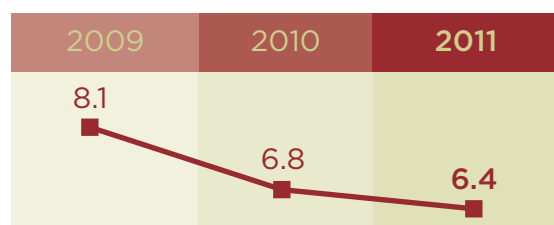
Births to teen mothers per 1,000



Low birth-weight babies



Inadequate prenatal care per 100 births



KEY COUNTY CONCERNS:

The projected increase in the county's older population will likely strain the health care system.

The county, like the nation, continues to see rising obesity rates.

Like many other rural counties, Miami County has fewer health care providers per capita, which may limit access to health care.

More than 4,000 Miami County residents are without health insurance.



www.reachhealth.org | 913-432-4196