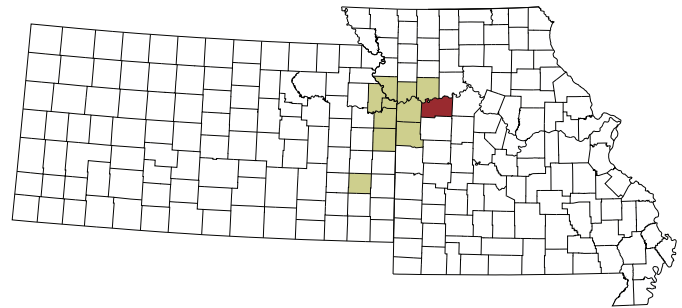


HEALTH PROFILE | Lafayette County, Missouri

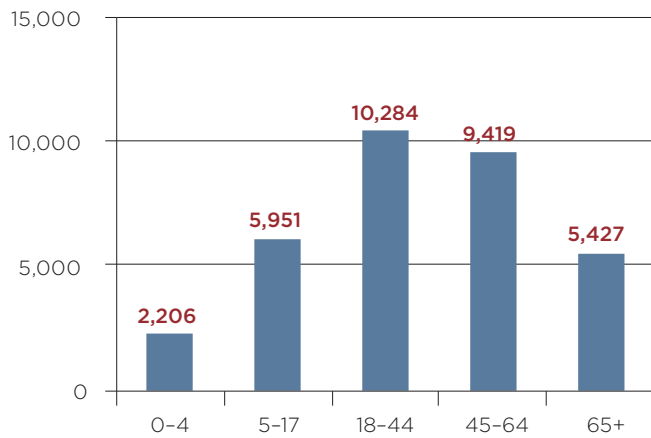
QUICK FACTS

2011 Population: 33,287
 Median Household Income: \$50,648
 Poverty Rate: 7.8%
 Unemployment Rate: 6.5%



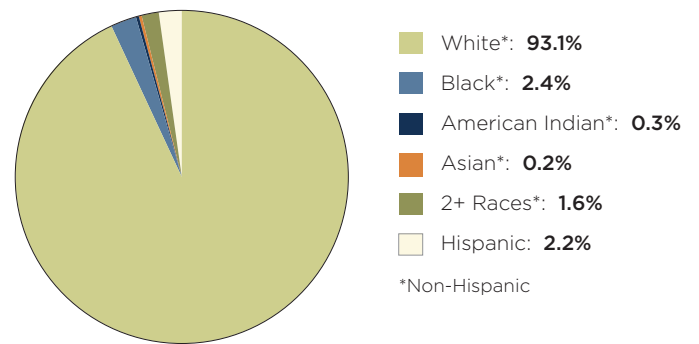
Population by Age, 2011

Source: US Census Bureau, American Community Survey



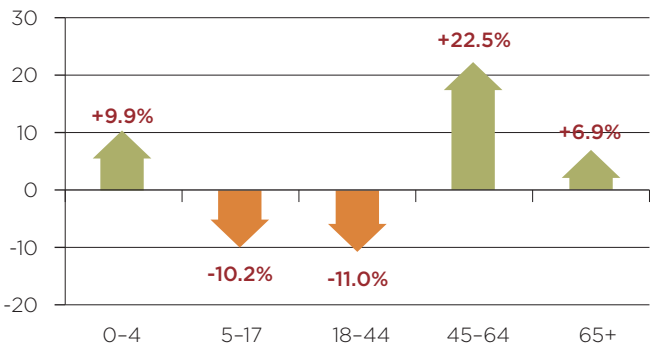
Population by Race, 2011

Source: US Census Bureau, American Community Survey



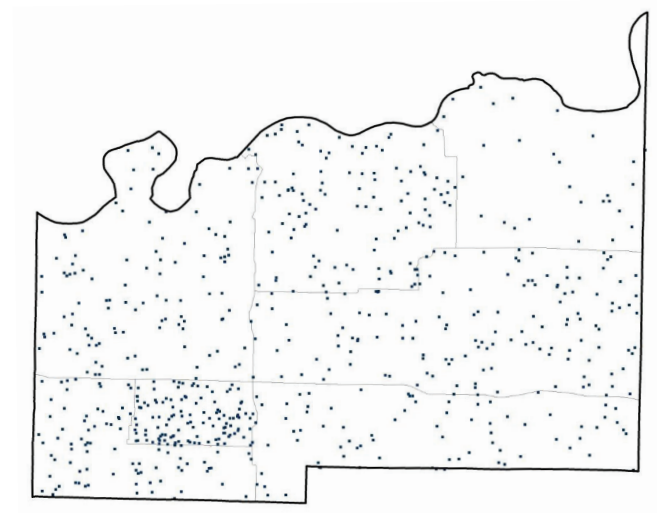
Population Shift: Percent Change by Age, 2000-2011

Source: US Census Bureau, American Community Survey



Population Density

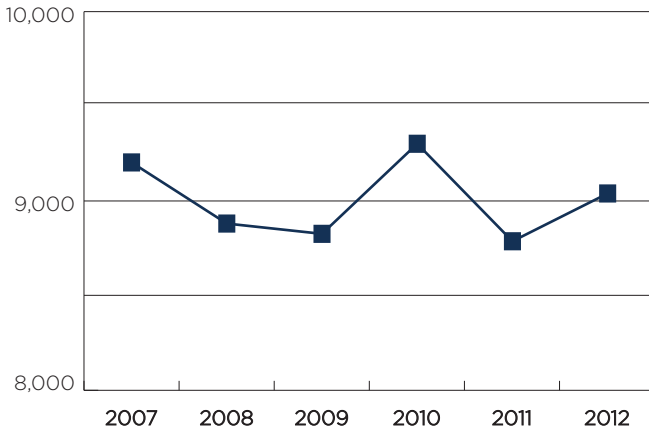
Source: US Census Bureau, American Community Survey



1 dot = 50 people

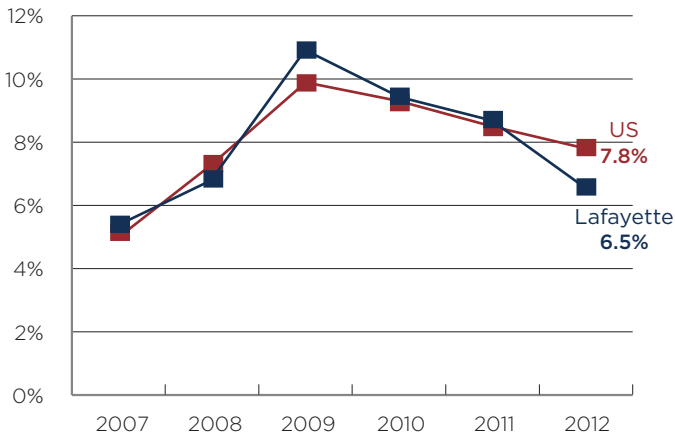
Employment

Source: Bureau of Labor Statistics



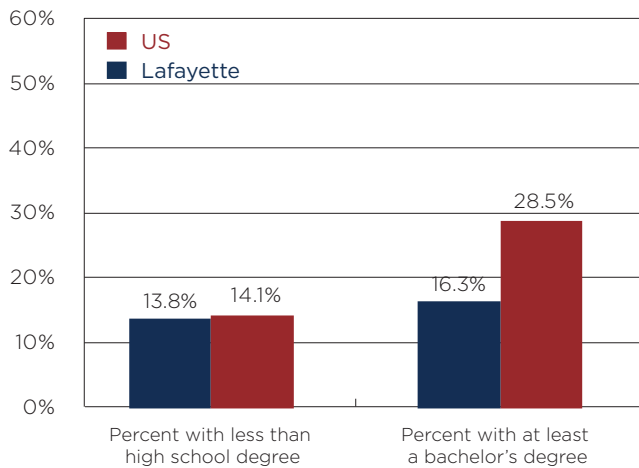
Unemployment Rate

Source: Bureau of Labor Statistics



Educational Attainment (Population age 25 and up)

Source: US Census Bureau, American Community Survey



Median Household Income

Source: US Census Bureau, American Community Survey



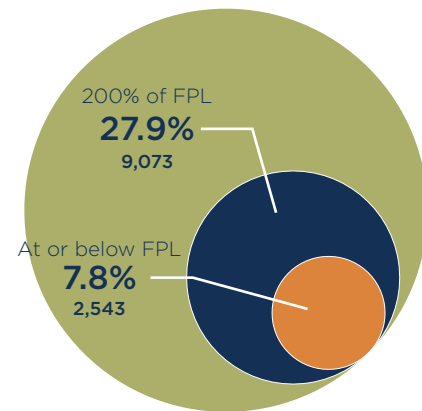
Lafayette County



United States

People Living in Poverty

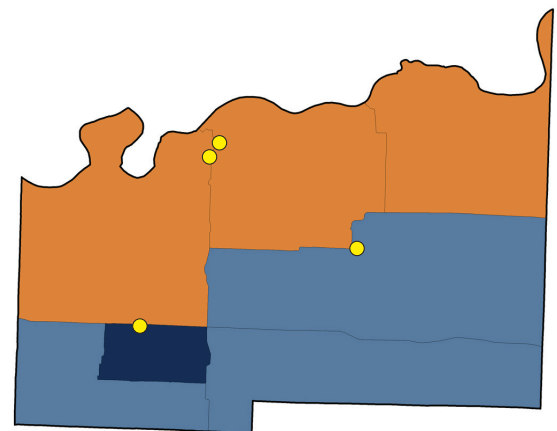
Source: US Census Bureau, American Community Survey



Federal Poverty Level (FPL) varies by household size. For four people (two adults and two related children), FPL is an annual income of \$23,050 or less; and 200% FPL is \$46,100 or less.

Poverty by Census Tract

Source: US Census Bureau, American Community Survey

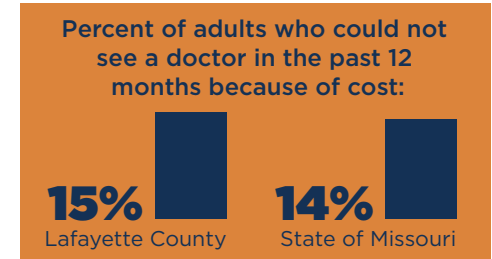
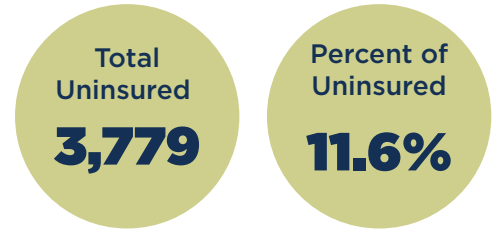
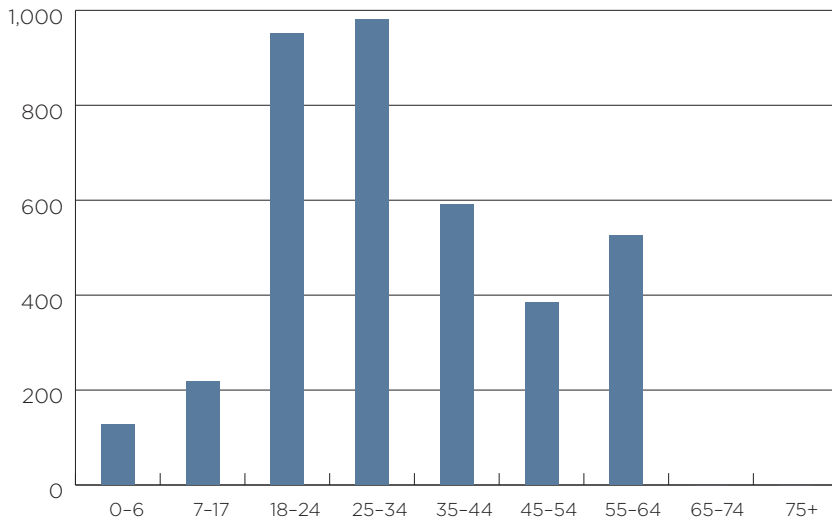


- Greater than 20%
- 15-19.99%
- 10-14.99%
- 5-9.99%
- Less than 5%
- N/A

● Location of Safety Net Clinics

Number of Uninsured by Age

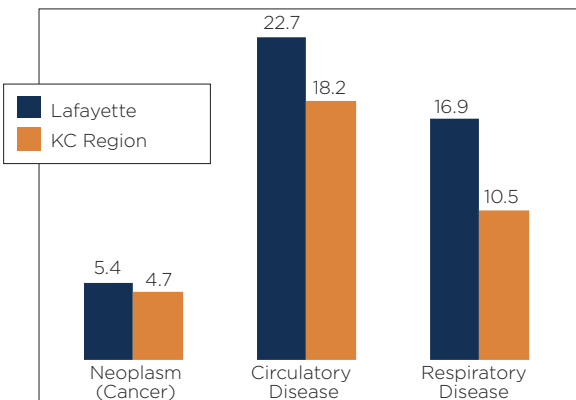
Source: US Census Bureau, American Community Survey



Source: County Health Rankings, Robert Wood Johnson Foundation

Hospital Discharges per 1,000

Source: Missouri Department of Health and Senior Services (DHSS), Missouri Information for Community Assessment (MICA)



Diabetes Incidence

Source: U.S. Centers for Disease Control, 2009

Percent of Lafayette County population age 20 and older diagnosed with diabetes: **10%**

Top 5 Causes of Death

Source: Missouri DHSS

Heart disease	32.5%
Cancer	22.2%
Chronic lower respiratory diseases	5.8%
Cerebrovascular disease (Stroke)	5.5%
Other digestive diseases	2.8%

Health Care Providers Per Capita

Source: HHS Area Resource File, 2010



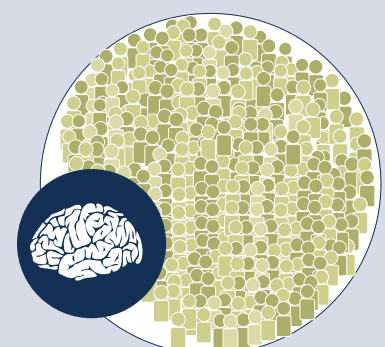
Primary Care Physicians

1: 3,333



Dentists

1: 3,333



Psychiatrists

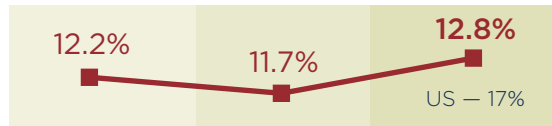
1: 33,333

Health Indicators/Trends

Source: Prenatal care data from Missouri DHSS; all others from County Health Rankings, Robert Wood Johnson Foundation



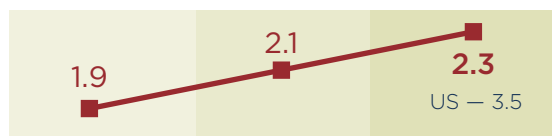
Adults in poor or fair health



Poor physical health days

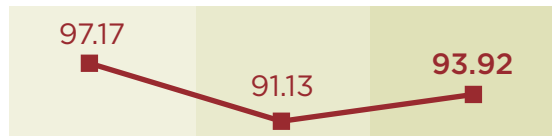


Poor mental health days

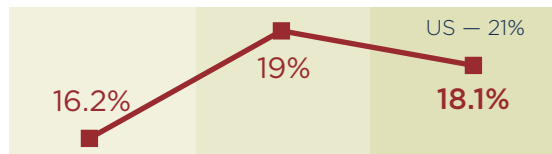


Preventable hospital stays

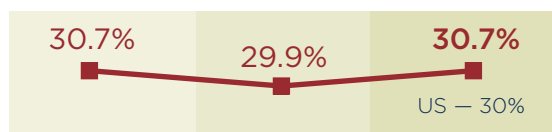
per 1,000 Medicare enrollees



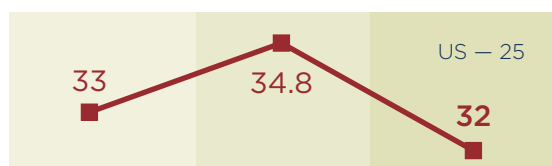
Adults who smoke



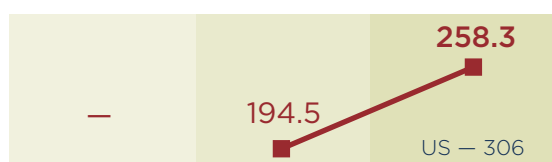
Adults who are obese



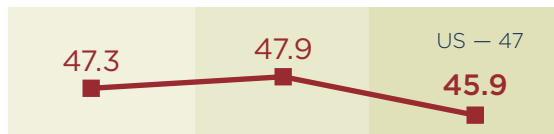
Auto crash deaths per 100,000



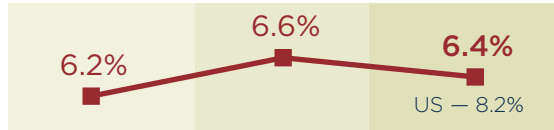
Sexually Transmitted Infections rate



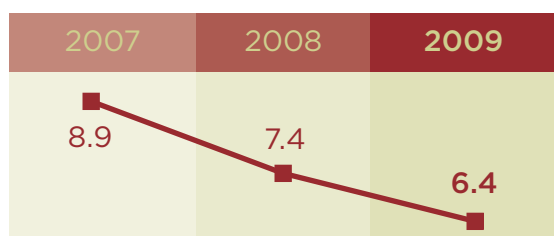
Births to teen mothers per 1,000



Low birth-weight babies



Inadequate prenatal care per 100 births



KEY COUNTY CONCERNS:

The projected increase in the county's older population will likely strain the health care system.

Like many other rural counties, Lafayette County has fewer health care providers per capita, which may limit access to health care.

In the past year, Lafayette County, like the nation, has seen rising obesity rates.

Auto crash deaths are higher than the national average.



www.reachhealth.org | 913-432-4196