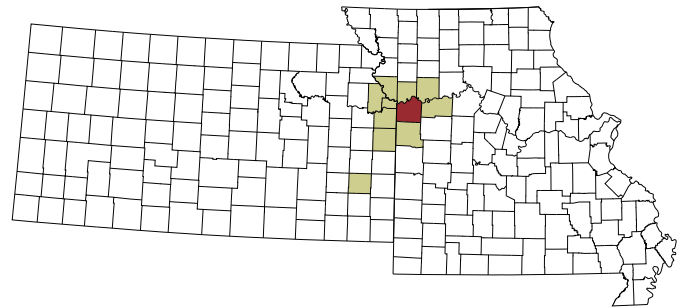


# HEALTH PROFILE | Jackson County, Missouri

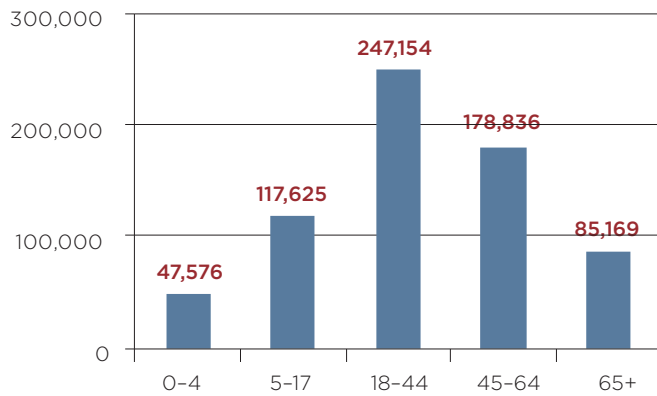
## QUICK FACTS

2011 Population: 676,360  
 Median Household Income: \$44,347  
 Poverty Rate: 15.0%  
 Unemployment Rate: 7.4%



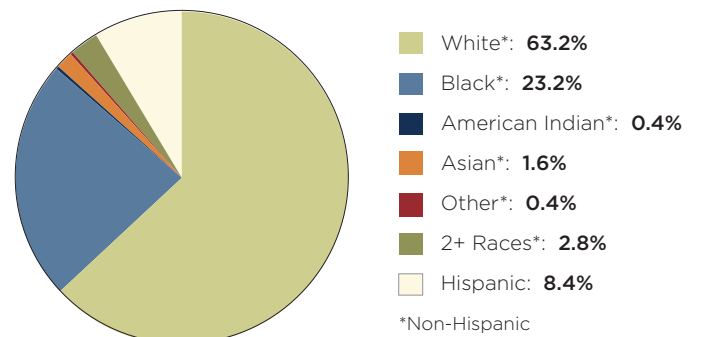
## Population by Age, 2011

Source: US Census Bureau, American Community Survey



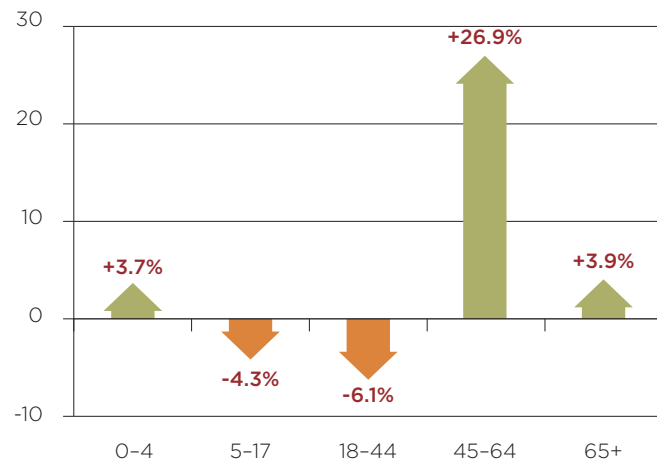
## Population by Race, 2011

Source: US Census Bureau, American Community Survey



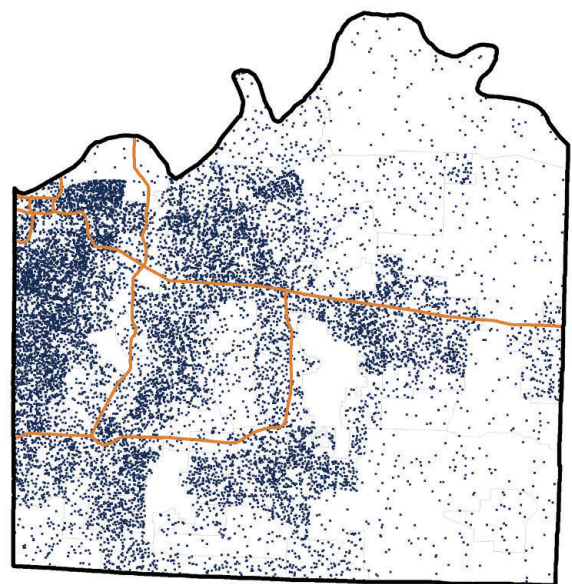
## Population Shift: Percent Change by Age, 2000-2011

Source: US Census Bureau, American Community Survey



## Population Density

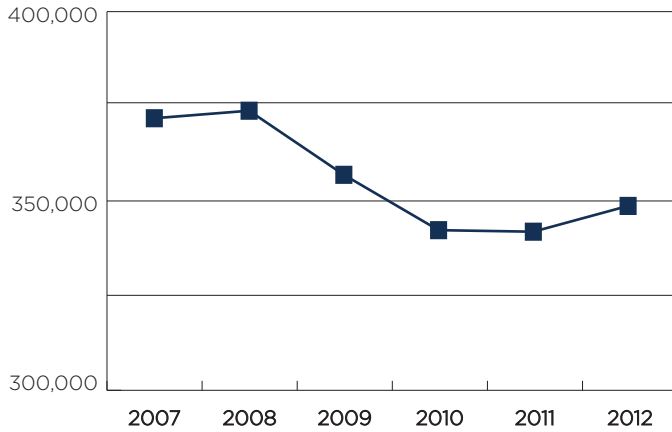
Source: US Census Bureau, American Community Survey



1 dot = 50 people

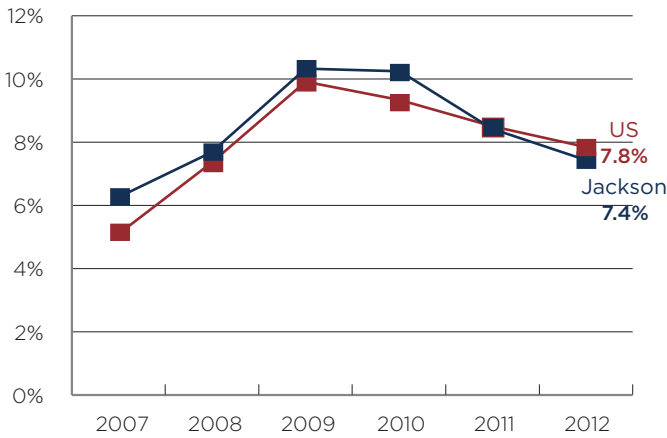
## Employment

Source: Bureau of Labor Statistics



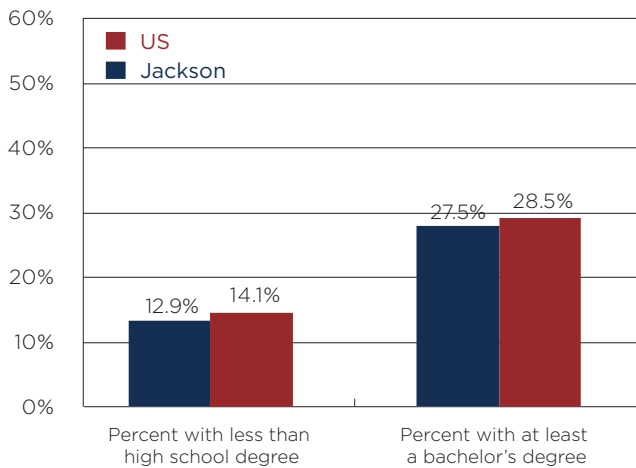
## Unemployment Rate

Source: Bureau of Labor Statistics



## Educational Attainment (Population age 25 and up)

Source: US Census Bureau, American Community Survey



## Median Household Income

Source: US Census Bureau, American Community Survey



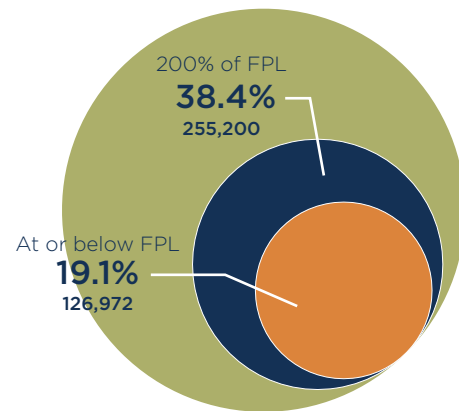
Jackson County



United States

## People Living in Poverty

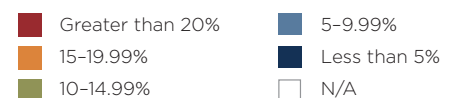
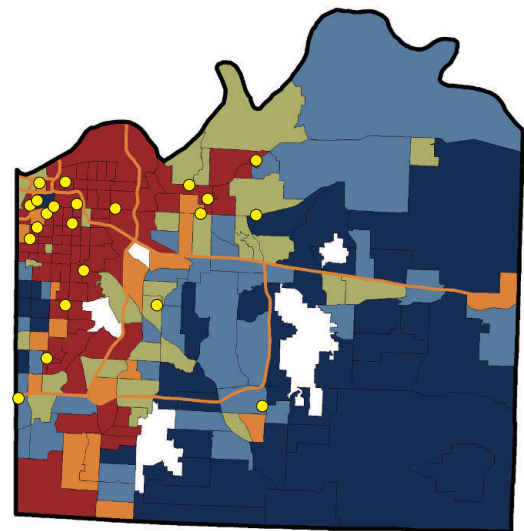
Source: US Census Bureau, American Community Survey



Federal Poverty Level (FPL) varies by household size. For four people (two adults and two related children), FPL is an annual income of \$23,050 or less; and 200% FPL is \$46,100 or less.

## Poverty by Census Tract

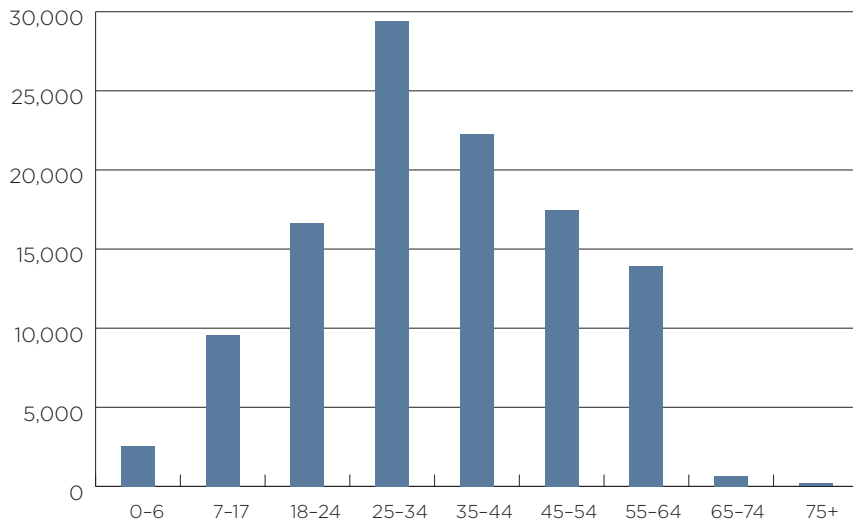
Source: US Census Bureau, American Community Survey



● Location of Safety Net Clinics

## Number of Uninsured by Age

Source: US Census Bureau, American Community Survey



Total Uninsured  
**112,719**

Percent of Uninsured  
**16.8%**

Percent of adults who could not see a doctor in the past 12 months because of cost:

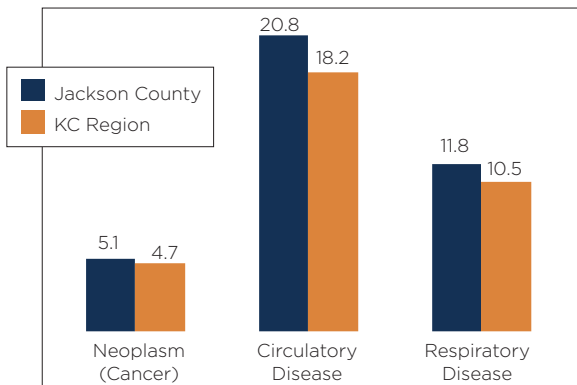
**15%**  
Jackson County

**14%**  
State of Missouri

Source: County Health Rankings, Robert Wood Johnson Foundation

## Hospital Discharges per 1,000

Source: Missouri Department of Health and Senior Services (DHSS), Missouri Information for Community Assessment (MICA)



## Diabetes Incidence

Source: U.S. Centers for Disease Control, 2009

Percent of Jackson County population age 20 and older diagnosed with diabetes:

**9%**

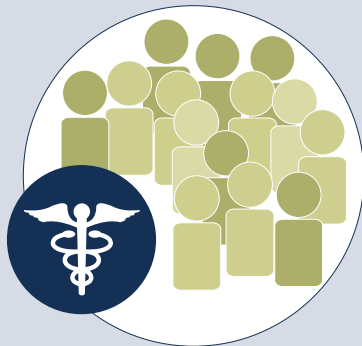
## Top 5 Causes of Death

Source: Missouri DHSS

Heart disease	24.2%
Cancer	22.2%
Cerebrovascular disease (Stroke)	5.8%
Chronic lower respiratory diseases	5.6%
All other accidents & adverse effects	3.5%

## Health Care Providers Per Capita

Source: HHS Area Resource File, 2010



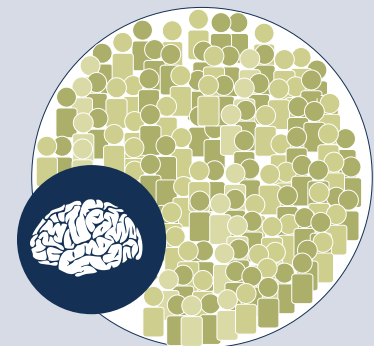
Primary Care Physicians

**1: 1,379**



Dentists

**1: 1,481**



Psychiatrists

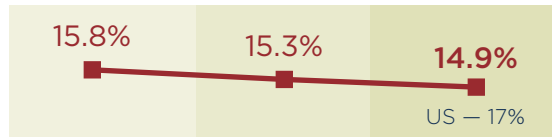
**1: 12,987**

## Health Indicators/Trends

Source: Prenatal care data from Missouri DHSS; all others from County Health Rankings, Robert Wood Johnson Foundation



### Adults in poor or fair health



### Poor physical health days

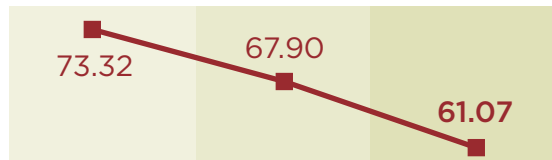


### Poor mental health days

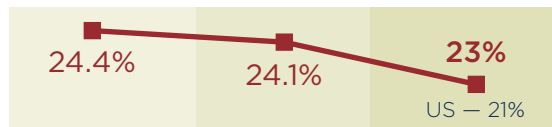


### Preventable hospital stays

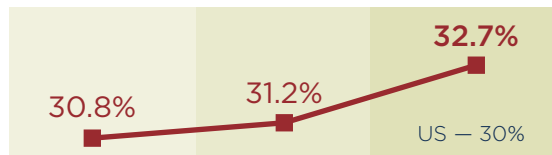
per 1,000 Medicare enrollees



### Adults who smoke



### Adults who are obese

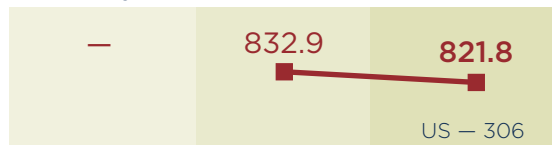


### Auto crash deaths

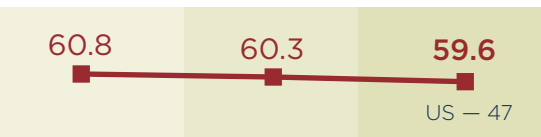
per 100,000



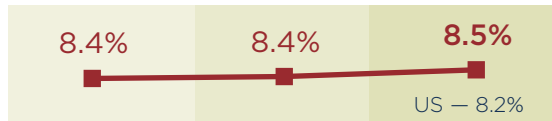
### Sexually Transmitted Infections rate



### Births to teen mothers



### Low birth-weight babies



### Inadequate prenatal care

per 100 births



## KEY COUNTY CONCERNS:

The projected increase in the county's older population will likely strain the health care system.

Like other urbanized counties, Jackson County has a high poverty rate and a high number of uninsured.

The number of births to teen mothers is higher than the national average.

The county, like the nation, continues to see rising obesity rates.



www.reachhealth.org | 913-432-4196