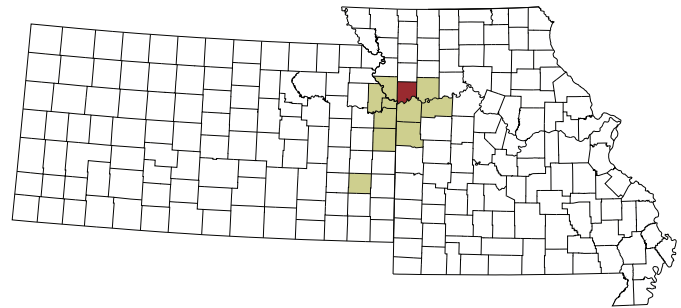


HEALTH PROFILE | Clay County, Missouri

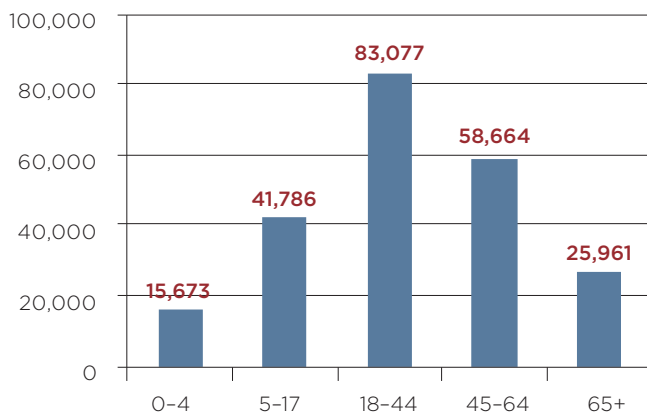
QUICK FACTS

2011 Population: 225,161
 Median Household Income: \$58,830
 Poverty Rate: 6.0%
 Unemployment Rate: 6.8%



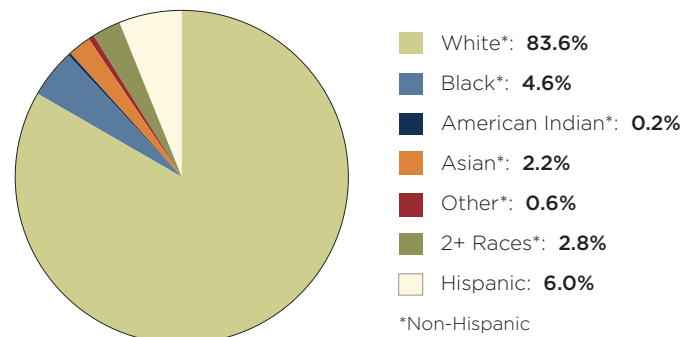
Population by Age, 2011

Source: US Census Bureau, American Community Survey



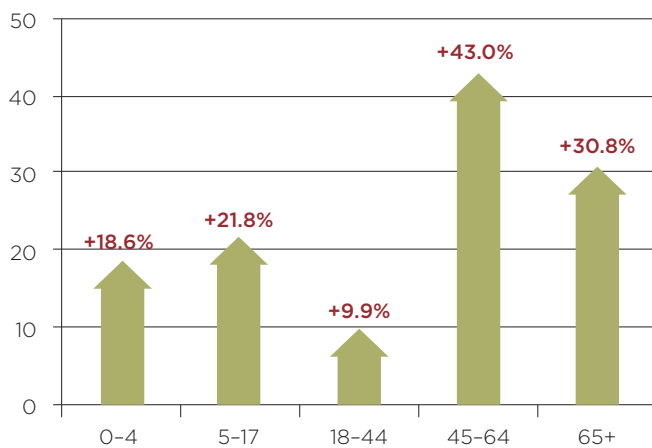
Population by Race, 2011

Source: US Census Bureau, American Community Survey



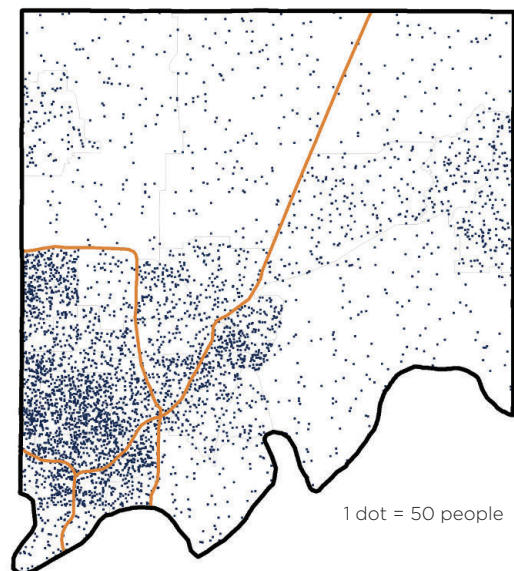
Population Shift: Percent Change by Age, 2000-2011

Source: US Census Bureau, American Community Survey



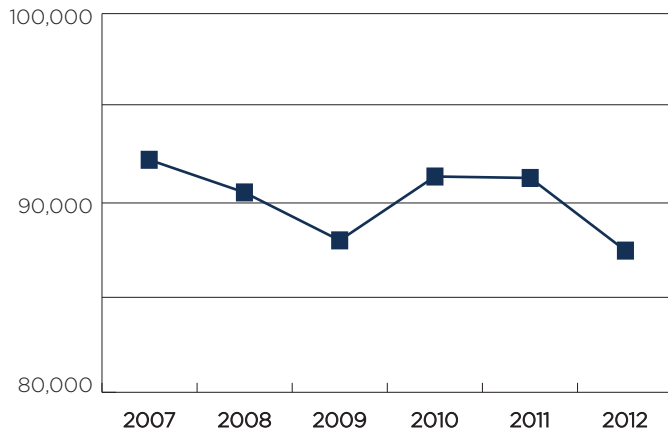
Population Density

Source: US Census Bureau, American Community Survey



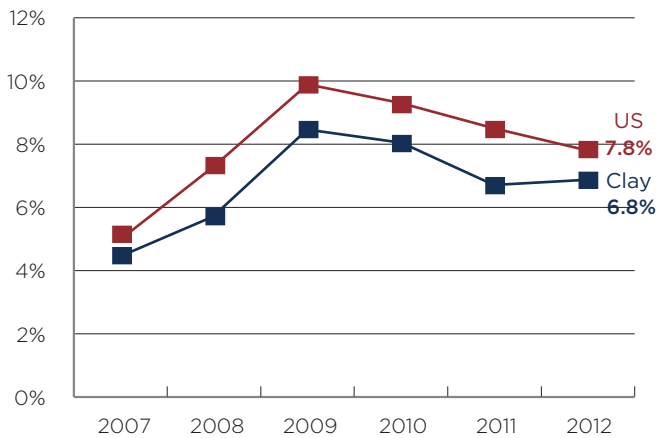
Employment

Source: Bureau of Labor Statistics



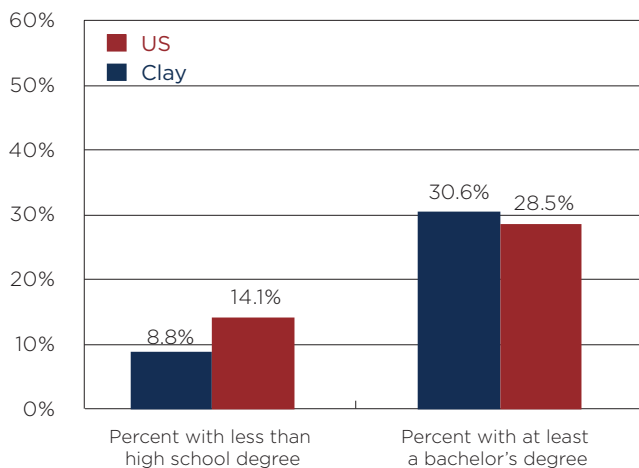
Unemployment Rate

Source: Bureau of Labor Statistics



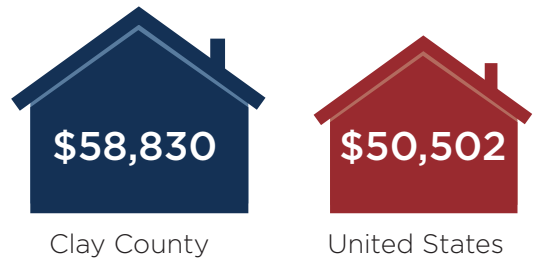
Educational Attainment (Population age 25 and up)

Source: US Census Bureau, American Community Survey



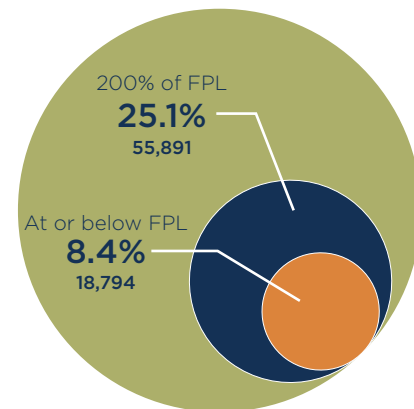
Median Household Income

Source: US Census Bureau, American Community Survey



People Living in Poverty

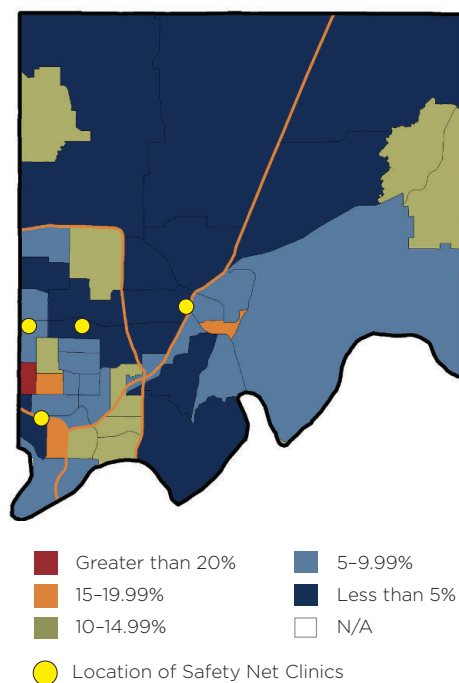
Source: US Census Bureau, American Community Survey



Federal Poverty Level (FPL) varies by household size. For four people (two adults and two related children), FPL is an annual income of \$23,050 or less; and 200% FPL is \$46,100 or less.

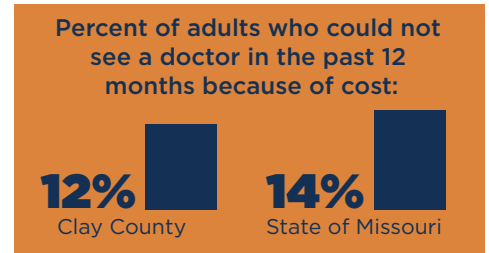
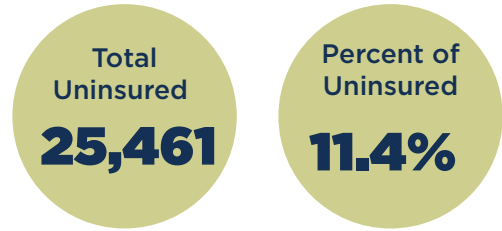
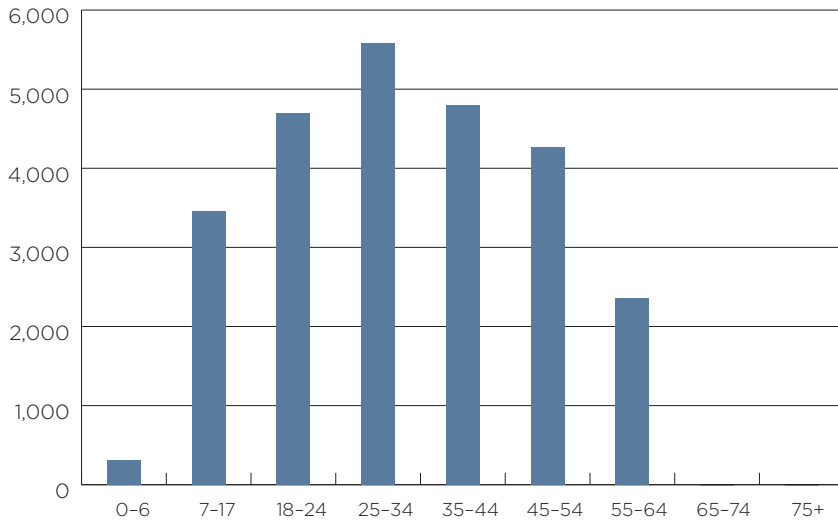
Poverty by Census Tract

Source: US Census Bureau, American Community Survey



Number of Uninsured by Age

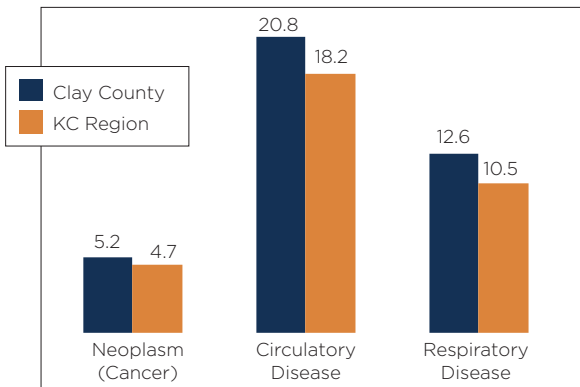
Source: US Census Bureau, American Community Survey



Source: County Health Rankings, Robert Wood Johnson Foundation

Hospital Discharges per 1,000

Source: Missouri Department of Health and Senior Services (DHSS), Missouri Information for Community Assessment (MICA)



Diabetes Incidence

Source: U.S. Centers for Disease Control, 2009

Percent of Clay County population age 20 and older diagnosed with diabetes:

9%

Top 5 Causes of Death

Source: Missouri DHSS

Cancer	25.0%
Heart disease	22.5%
Chronic lower respiratory diseases	7.6%
Cerebrovascular disease (Stroke)	5.3%
All other accidents & adverse effects	3.5%

Health Care Providers Per Capita

Source: HHS Area Resource File, 2010



Primary Care Physicians

1: 1,761



Dentists

1: 1,748



Psychiatrists

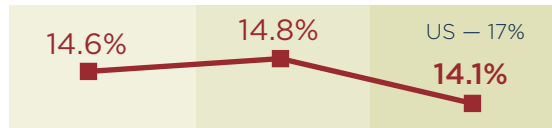
1: 31,250

Health Indicators/Trends

Source: Prenatal care data from Missouri DHSS; all others from County Health Rankings, Robert Wood Johnson Foundation



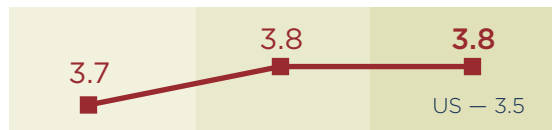
Adults in poor or fair health



Poor physical health days

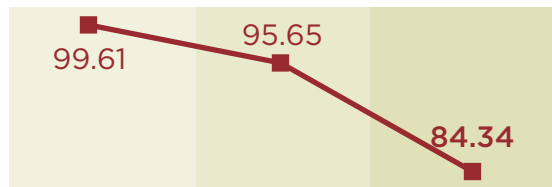


Poor mental health days

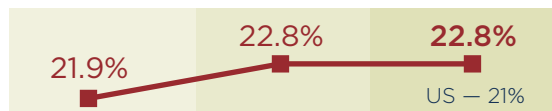


Preventable hospital stays

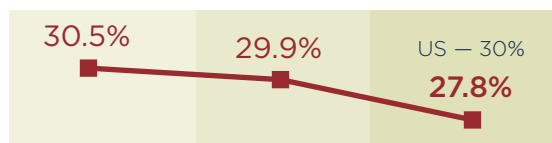
per 1,000 Medicare enrollees



Adults who smoke

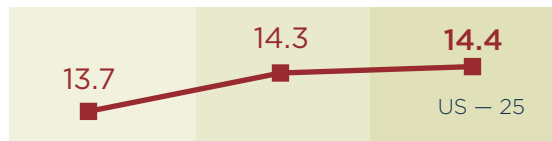


Adults who are obese

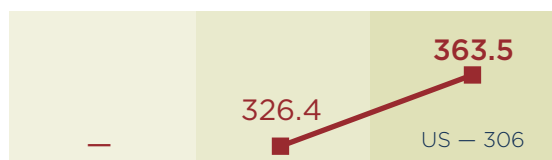


Auto crash deaths

per 100,000

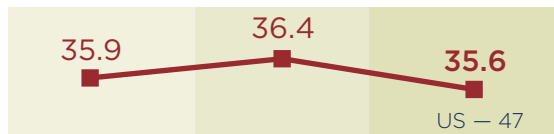


Sexually Transmitted Infections rate

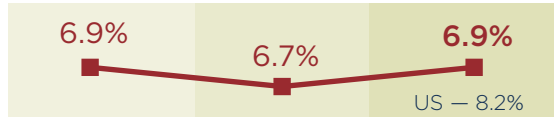


Births to teen mothers

per 1,000

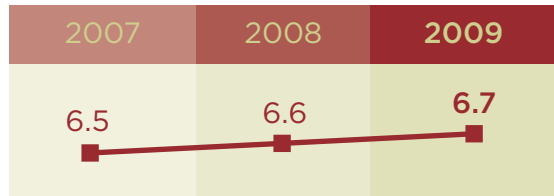


Low birth-weight babies



Inadequate prenatal care

per 100 births



KEY COUNTY CONCERNS:

The projected increase in the county's older population will likely strain the health care system.

Nearly 19,000 Clay County residents live in poverty, and more than 25,000 are without health insurance.

Unlike other areas, Clay County has seen falling obesity rates; but the number of smokers is not declining as it is in other counties.



www.reachhealth.org | 913-432-4196