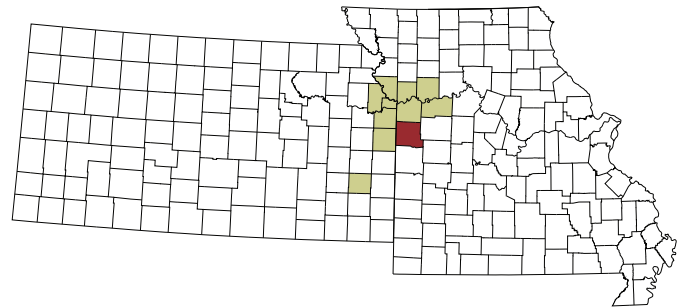


HEALTH PROFILE | Cass County, Missouri

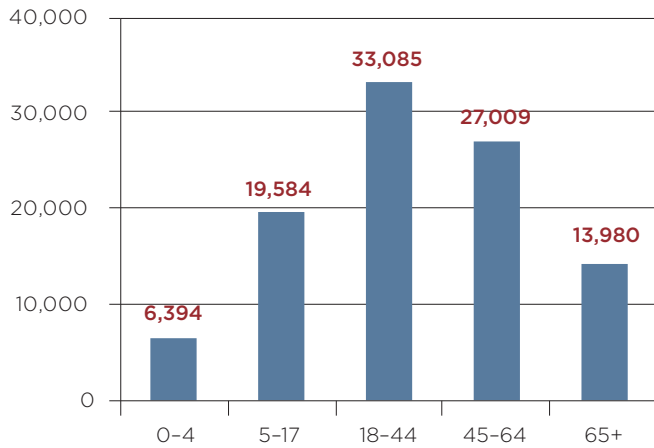
QUICK FACTS

2011 Population: 100,052
 Median Household Income: \$53,936
 Poverty Rate: 9.0%
 Unemployment Rate: 6.4%



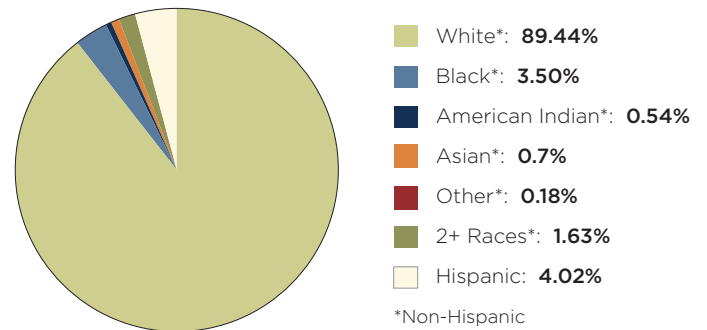
Population by Age, 2011

Source: US Census Bureau, American Community Survey



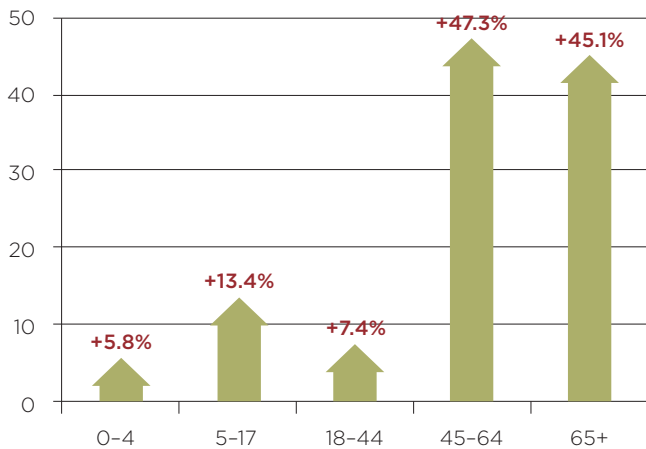
Population by Race, 2011

Source: US Census Bureau, American Community Survey



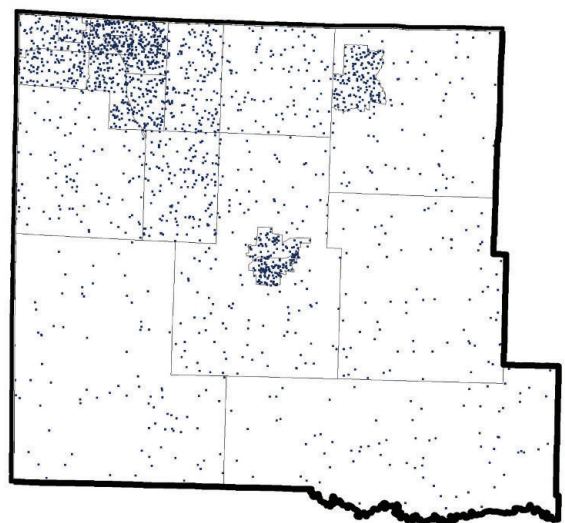
Population Shift: Percent Change by Age, 2000-2011

Source: US Census Bureau, American Community Survey



Population Density

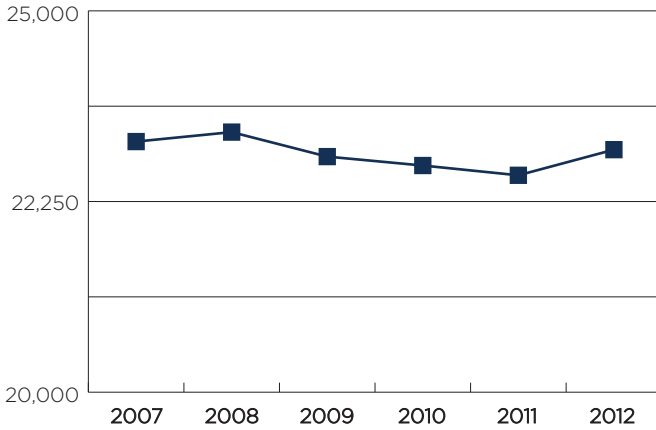
Source: US Census Bureau, American Community Survey



1 dot = 50 people

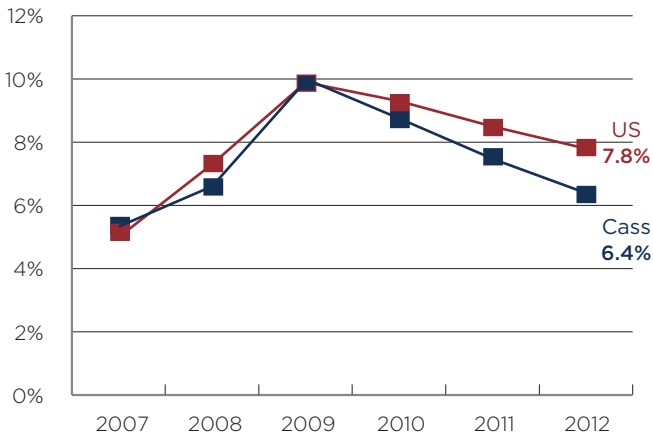
Employment

Source: Bureau of Labor Statistics



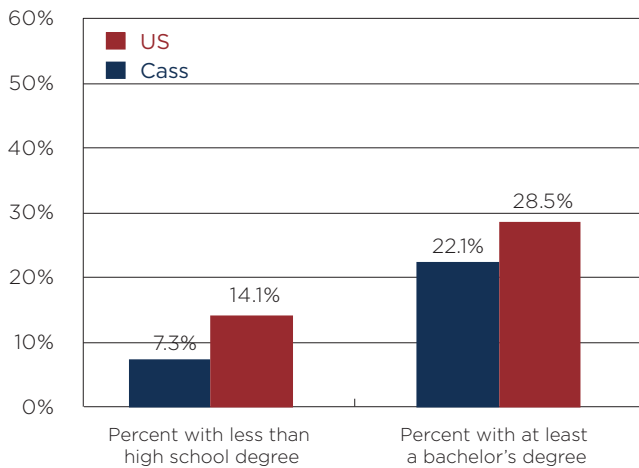
Unemployment Rate

Source: Bureau of Labor Statistics



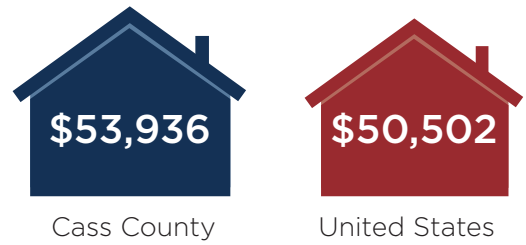
Educational Attainment (Population age 25 and up)

Source: US Census Bureau, American Community Survey



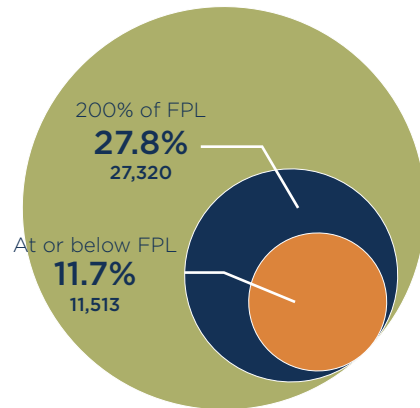
Median Household Income

Source: US Census Bureau, American Community Survey



People Living in Poverty

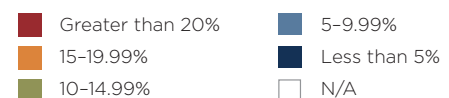
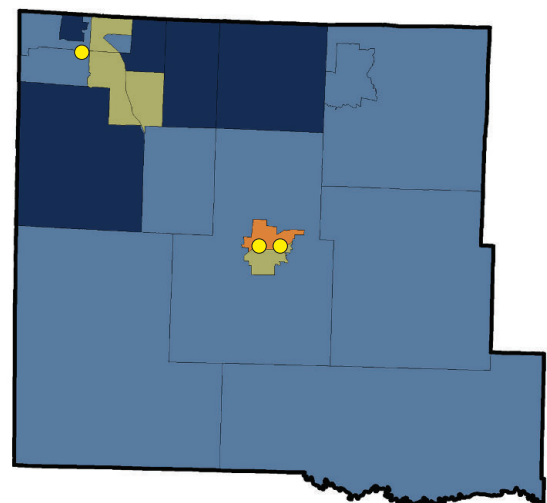
Source: US Census Bureau, American Community Survey



Federal Poverty Level (FPL) varies by household size. For four people (two adults and two related children), FPL is an annual income of \$23,050 or less; and 200% FPL is \$46,100 or less.

Poverty by Census Tract

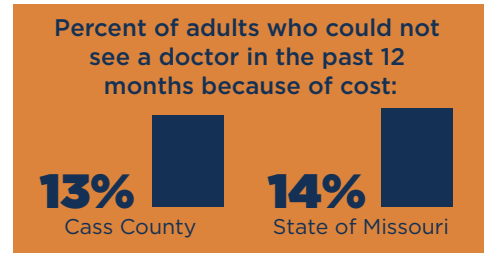
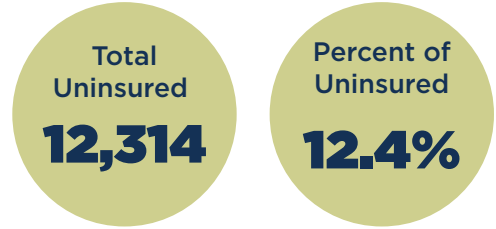
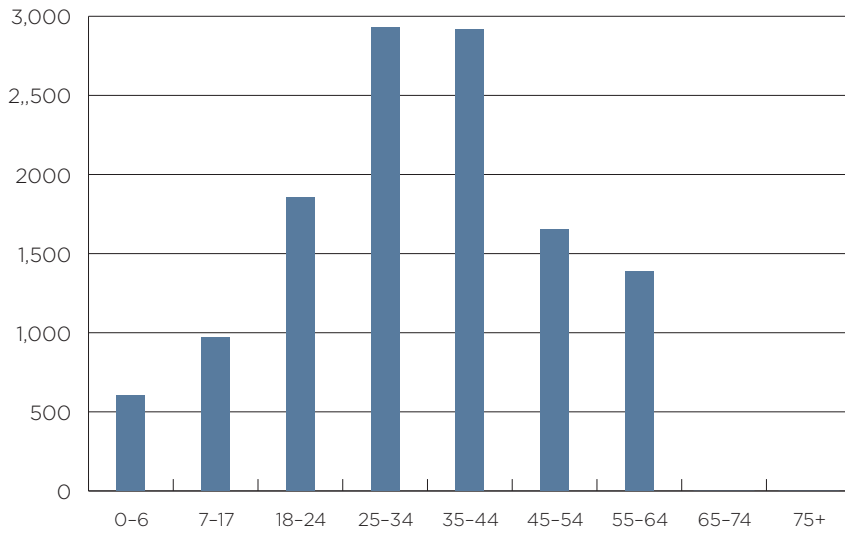
Source: US Census Bureau, American Community Survey



● Location of Safety Net Clinics

Number of Uninsured by Age

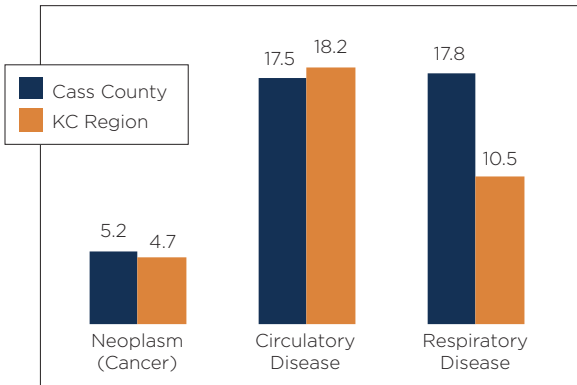
Source: US Census Bureau, American Community Survey



Source: County Health Rankings, Robert Wood Johnson Foundation

Hospital Discharges per 1,000

Source: Missouri Department of Health and Senior Services (DHSS), Missouri Information for Community Assessment (MICA)



Diabetes Incidence

Source: U.S. Centers for Disease Control, 2009

Percent of Cass County population age 20 and older diagnosed with diabetes:

10%

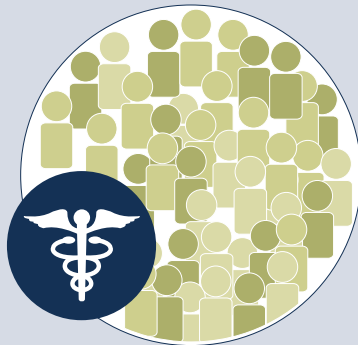
Top 5 Causes of Death

Source: Missouri DHSS

Heart disease	25.0%
Cancer	23.0%
Cerebrovascular disease (Stroke)	6.7%
Chronic lower respiratory diseases	6.5%
All other accidents & adverse effects	3.4%

Health Care Providers Per Capita

Source: HHS Area Resource File, 2010



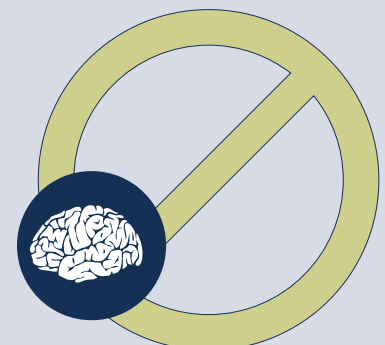
Primary Care Physicians

1: 4,149



Dentists

1: 3,559



Psychiatrists

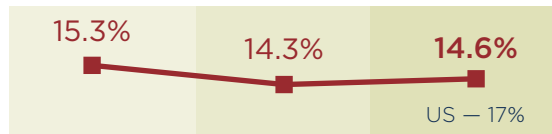
0

Health Indicators/Trends

Source: Prenatal care data from Missouri DHSS; all others from County Health Rankings, Robert Wood Johnson Foundation



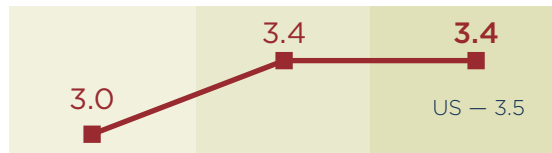
Adults in poor or fair health



Poor physical health days



Poor mental health days

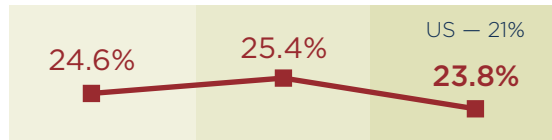


Preventable hospital stays

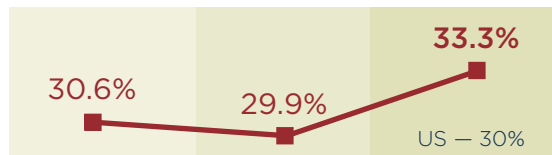
per 1,000 Medicare enrollees



Adults who smoke



Adults who are obese



Auto crash deaths

per 100,000



Sexually transmitted infections rate

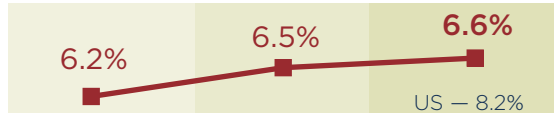


Births to teen mothers

per 1,000

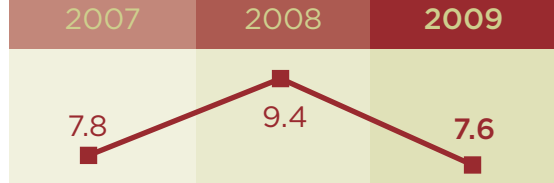


Low birth-weight babies



Inadequate prenatal care

per 100 births



KEY COUNTY CONCERNS:

The projected increase in the county's older population will likely strain the health care system.

The county's percentage of adults who smoke and adults who are obese exceed national averages.

With no psychiatrists based in the county, residents lack easy access to mental health care.



www.reachhealth.org | 913-432-4196