

2010 ANNUAL REPORT



Equal access. It's within reach.



From THE CHAIR & CEO

In 2010, the REACH Foundation began a rigorous and exciting strategic planning process to define the Foundation's focus for the next five years. This process involved a review of the Foundation's grants and funding processes, interviews with grantees and community and foundation leaders, and an analysis of health conditions across the region that revealed areas of opportunity and concern.

REACH has invested \$27 million since 2005 in programs and initiatives that support our vision of access to quality health care for poor and medically underserved individuals. While we've seen improvements in the health care environment in this region during this time, there are still many areas of concern. The numbers of people in poverty have increased in each of the six counties that make up our funding region, particularly in suburban areas. The numbers of uninsured and underserved grew even larger during the recent recession – with 445,000 people in the Greater Kansas City region uninsured or on Medicaid. And children's health status in areas such as oral health hasn't made much gain, despite increased public attention.

Even with these challenges, there were reasons for optimism in 2010. The passage of the Affordable Care Act (ACA) represents a significant opportunity to transform the health of thousands of people in our region. While many people argue that the ACA is not a perfect law, it creates a framework for systematically addressing health care access and quality.

The Foundation has followed the roll-out of provisions of the health care law and looked for opportunities to support its implementation. In 2010, REACH joined with other regional health foundations to support legal and actuarial expertise to help the Kansas Health Policy Authority plan for an

expanded Medicaid population. In addition, five health foundations, including REACH, established a \$450,000 fund to help Kansas nonprofits and governmental entities take advantage of federal grant and technical assistance opportunities connected with health reform. The funds will be available in 2011.

Given that health reform is still in the very early stages of implementation, REACH continues to invest in the region's health care safety nets. Nine clinics participated in the Medical Home Initiative in 2010. By fall, four of the clinics were preparing to apply for National Committee for Quality Assurance (NCQA) recognition as patient-centered medical homes.

The Foundation will begin to implement new strategic priorities in 2011. Our overall focus on uninsured and medically underserved populations will remain the same, but our grant making strategies will adjust in order to direct resources where we can achieve the greatest improvements.

We believe this annual report demonstrates our steadfast commitment to investing in effective programs, community-driven ideas and continuous improvement. We welcome your thoughts on our grant making efforts in 2010, and look forward to sharing our strategic priorities with you in 2011.



Scott Glasrud
Scott Glasrud
Chair



Brenda R. Sharpe
Brenda R. Sharpe
President & CEO



Highlights 2010

Grant Requests Received

140

Grants Awarded in 2010

89

Number of Organizations Supported

54

Total Awarded in 2010

\$5 Million

Total Awarded Since 2005

\$26.8 Million



Our History

OUR VISION

All poor and underserved people in our community will have quality health care.

OUR MISSION

Inform and educate the public and facilitate access to quality health care for poor and underserved people.

The REACH Healthcare Foundation was established in 2003 with proceeds from the sale of Health Midwest, a regional nonprofit hospital and health care organization, to Hospital Corporation of America. The Foundation was approved as a 501(c)(3) charitable organization in May 2004 and the following month received nearly \$100 million in initial assets. The Foundation has subsequently received additional payments resulting from the sale.

Since our start, the REACH Foundation has maintained a consistent focus on ensuring access to quality, affordable health care for poor and underserved individuals. We invest in programs and initiatives in a six-county geographic area that includes Allen, Johnson and Wyandotte counties in Kansas; Cass, Jackson and Lafayette counties in Missouri, and Kansas City, Missouri.



The health care “safety net” is a critical system of care for thousands of people in the Greater Kansas City region.

In 2010, the REACH Foundation asked the Mid-America Regional Council to analyze health conditions in the six counties that make up our funding region. A review of insurance data and health outcomes revealed that 24 percent of the population in our service area are uninsured or on Medicaid. Referred to as “medically vulnerable,” these are the individuals who depend most on the availability of a health care safety net.

In 2010, the Foundation awarded nine core operating grants to safety net clinics to support their overall operations because they provide essential medical care to the uninsured and medically underserved.

These clinics included a federally qualified health center, faith-based and school-based clinics, clinics serving

special populations and medical student-managed programs. Several of the region’s safety net clinics also participate in the Foundation’s Medical Home Initiative, a targeted technical assistance effort that is helping safety net clinics achieve nationally recognized Patient-Centered Medical Home standards.

Many of the grants in this priority area supported salaries and related expenses of hiring and maintaining caring and competent health providers – the most fundamental element in providing quality health care. Other grants supported development of electronic medical records, technology to support better patient scheduling, and chronic disease management programs.

Safety Net SERVICES

Health Partnership Clinic of Johnson County

The county's only provider of free medical and dental services to uninsured adults.

The Health Partnership Clinic of Johnson County is the largest safety net clinic in Johnson County, Kansas, providing primary medical care and dental services to 4,000 patients a year. Unlike many safety net clinics that charge for services on a sliding scale, the Health Partnership Clinic is the county's only provider of free medical and dental services to uninsured adults.

Amanda Lowe, president and CEO of the Health Partnership Clinic, says she frequently has to explain to community members the growing need for safety net health services in Johnson County because many people don't see the poverty in their community. While the overall poverty rate is low compared with neighboring Wyandotte County (4% of residents at or below 100% of the federal poverty level in Johnson County versus 20% in Wyandotte), Johnson County ranks second in actual numbers of poor in the six-county, bi-state region. The county also has the second highest number of uninsured residents – 43,000 – in the state of Kansas.

The clinic's patient population is increasingly diverse. On a weekday

morning in the clinic, several of the patients are Spanish-speaking and require translation assistance. A translator on staff pops into the medical exam rooms to help the providers communicate with patients and discuss their treatment options. More than 40% of patients are Hispanic and 11% are African American. Several staff members speak Spanish, but they regularly use the language phone line in the exam rooms to communicate with patients who speak Russian, Hindi, and other Asian and African languages.

When the clinic got its start in the 1990s, it primarily provided acute and limited chronic disease care. In 2008, the clinic broadened its scope to meet increased demand for primary care, specialty care, and medication and chronic disease management. The clinic also expanded dental services from three days a week to full time. Strengthening chronic disease care is a high priority. More than 80% of patients have one or more chronic diseases, and Lowe expects the rate could increase as area hospitals continue to refer patients for follow-up

care. Lowe says this patient population particularly needs access to specialty care. Medical volunteers provide cardiology, dermatology, pulmonology, gynecology, rheumatology, orthopedics, hematology, urology, podiatry and chiropractic care on site. The clinic works through the Wy/Jo Care Network for specialty care. Even so, nearly every week there's a patient who requires specialty care that isn't readily available. Lowe says she and her staff work the phones to find a specialist willing to help.

In 2010, the Health Partnership Clinic received a core operating grant from REACH to support overall operations. In addition, the clinic participates in the professional development and coaching offered through the Foundation's Medical Home Initiative. Lowe says core operating support helps the clinic maintain essential services. The Medical Home Initiative is helping the clinic address tracking of medical tests, internal and external referrals, use of the electronic disease registry and other systems that enhance health service delivery.

PHOTO: Zack Lerner, a student in the Family Nurse Practitioner program at KU Medical Center, examines a young woman who is being treated for issues related to liver function. During her visit, she receives nutrition counseling and other guidance to address symptoms that might lead to diabetes.



Nationally, 17 million children, or one child in five, go without dental care.

Oral health has been a funding priority for the REACH Foundation since our beginning. The Foundation has funded nearly two dozen oral health programs serving thousands of children, adolescents and adults. We have invested several million dollars in early intervention programs for preschool-age children; urgent care for children, adolescents and adults; services for homebound and developmentally disabled adults; funds to purchase equipment and supplies; and school-based oral health screenings, referral services and more.

Over time, as we invested in direct services, we recognized the critical importance of coalition building, consumer engagement, oral health policy, and local and statewide efforts to develop more lasting solutions to this health issue.

To advance these efforts, in 2010 the Foundation continued core support for Oral Health Kansas, a

coalition that advocates for state funding for oral health services. REACH also participated in a community planning process in Cass County, Missouri, to open a dental clinic to serve low-income children because there were no Medicaid dental providers in the county. REACH supported technical assistance to help the county's oral health coalition engage community members and develop a plan. The Foundation subsequently awarded a grant to fund staff at the clinic, which is expected to open in July 2011.

REACH also joined with two Kansas health philanthropies to support a planning effort coordinated by Kansas Action for Children that brought together dentists, hygienists, consumers and community leaders to develop proposals for addressing the state's dental workforce shortage. The project produced data on dental access challenges and explored a variety of mid-level dental provider models.

Oral Health FUNDING

Synergy Services Inc.

Dedicated to providing young people with the highest quality mental health care, as well as medical and dental services.

A teenage girl stepped out of the dental exam room in Synergy Services' medical and dental clinic and gave her mother a big smile. "It's all good," she said, and gave her mother a thumbs up. The dental assistant said the teen could floss more, but the mother was pleased since her daughter hadn't been to a dentist in at least two years.

Synergy Services opened a Homeless Youth Campus in 2009 on five and half acres in Kansas City, Missouri. Part of that campus is a 24,000 square foot Youth Resiliency Center that offers an array of services for homeless, runaway and abused youth ages 12 to 20. The center opened in March 2010; the on-site dental and medical clinic began services in May. The Youth Resiliency Center was built to promote growth and health by addressing mental, physical and oral health needs of displaced youth. The center also is a resource for other low-income, at-risk youth in the community who are without health services.

A lack of a stable home life, poverty and the strains of homelessness can result in an array of serious

health problems – poor hygiene, malnutrition, infections, sexually transmitted diseases, decayed and missing teeth, physical injuries, broken bones and other problems. Common issues among the youth served include extreme fatigue, infection, sexually transmitted infections, unplanned pregnancy, bladder infections, birth control, rashes, allergies, asthma, headaches and stomach pain. In terms of oral health, most of the youth treated have had little or no dental care in years, if ever.

Besides these health risks, Synergy's clients face other barriers in accessing health care. Separation from families means lack of insurance and payment ability, confusion regarding parental consent for health services, challenges navigating a complex health care system and overall lack of trust of health providers.

The REACH Foundation awarded Synergy a program grant in 2009 to support medical services. In 2010, the Foundation's funds supported both medical and dental care. Medical care is contracted through Children's

Mercy Hospital. Oral health services are provided by Miles of Smiles, Inc., a nonprofit, portable dental program that operates in schools in Kansas City's Northland. Through the REACH grant, Synergy contracts with Miles of Smiles to provide on-site dental care, including oral exams, prophylaxis, fillings, topical fluoride X-rays, sealants, extractions, crowns and other services two days a week during the school year and full time during the summer.

A medical case manager refers and assists youth with obtaining medical and dental services. The case manager connects youth with more serious health conditions to community services. Synergy's staff also has established connections with human service organizations, churches, schools and other groups that serve at-risk youth to make them aware of the clinic. By year-end, Miles of Smiles had treated 420 youth for more than 800 patient visits. The medical clinic provided health care to 237 youth for 324 patient visits.

PHOTO: Donna, a mother of five, says she learned about the clinic when her teenage daughter was referred for therapy for depression. She said none of her children had seen a dentist in at least two years because her household income wasn't enough to pay for dental care.



Mental health disorders occur across all sectors of society. Unfortunately, services aren't readily available to many who need them.

Mental disorders are fairly widespread through the population. According to the National Institute of Mental Health, one in four adults and one in 10 children and adolescents experience a mental health disorder in any given year. Mental illnesses often appear during adolescence, but it can take several more years for illnesses to be diagnosed.

Research has improved our ability to diagnose and treat conditions. Yet, less than one-third of adults with a diagnosable disorder and even fewer children receive services at all. There can be long-term consequences to individuals, families and communities when individuals do not receive care. Unfortunately, the recent recession has resulted in substantial cuts to state funds for mental health services. In Kansas and Missouri, these reductions have affected community and hospital-based psychiatric care, supportive housing, case management, access to medications and eligibility for services.

In 2010, the REACH Foundation awarded approximately \$1.7 million to support mental health services in our six-county funding area, representing 34 percent of the Foundation's total grant making for the year.

Our funds primarily supported evidence-based therapeutic treatment for children and youth. These programs included outpatient and day treatment services for children who've experienced neglect, trauma or abuse; psychiatric services for children and adults; on-site access to therapy at an alternative school in Kansas City, Missouri; intensive psychiatric care for severely psychiatrically challenged youth; and support for culturally competent therapy for youth and adults in a largely Spanish-speaking community in Kansas City, Kansas.

Mattie Rhodes Center

Latino Mental Health/Kansas Access Project

In a small guest room at the back of a parish office building at a Kansas City, Kansas, church, Elizabeth Moon Carter meets with Adriana, a patient in her early 30s who has been seeing Moon Carter for several months for depression.

Moon Carter is a bilingual licensed master of social work therapist with a Mattie Rhodes Center program that is working to increase access to culturally competent mental health services in a predominantly Hispanic neighborhood in Kansas City, Kansas. Patients are referred for therapy through a local safety net health clinic, Argentine Middle School, churches, social service agencies and word-of-mouth. Mattie Rhodes employs a full-time and part-time therapist and a Community Educator who reaches out to residents through these community partners to address misinformation about mental health and make people aware that help is available.

Mattie Rhodes serves more than 1,000 primarily Spanish-speaking individuals annually with mental

health treatment and social services, and is the only fully bilingual certified behavioral health care provider in the Greater Kansas City area.

The organization understands the cultural barriers and other challenges of providing mental health services in the Latino community.

Moon Carter says most of her patients don't come to her for "mental health services," but instead say they need "help with a problem." Moon Carter uses cognitive-behavioral therapy (CBT), an evidence-based treatment approach that is problem-focused and goal-directed. CBT helps patients recognize and identify distorted thought patterns and then guides them toward more positive responses.

In working with Adriana, Moon Carter has helped her recognize triggers that affect her thoughts and emotions. The young mother, who experienced anxiety, couldn't stop her thoughts from racing at times, and simply felt overwhelmed, has improved her ability to take steps to slow her responses. Through therapy,

she has worked on relaxation, exercises and other techniques for breaking these cycles.

The therapist uses a patient outcomes measurement tool and session rating scales to monitor patient progress and therapist effectiveness. To build trust in the community, Mattie Rhodes' staff stays connected with the referral organizations to ensure the Latino Mental Health program is addressing the community's needs.

Mattie Rhodes Latino Mental Health/Kansas Access Project served 221 youth and adults in 2010.

PHOTO: Therapist Elizabeth Moon Carter says the most common mental health issues are anxiety, grief and loss, anger management and feelings of depression and alienation, often related to struggles with acculturation.

Initiatives

The REACH Foundation invests in initiatives to advance improvements in health care systems and expand promising programs.

Initiatives also offer opportunities to partner with regional and national foundations. In 2010, two of the Foundation's early initiatives that involved partnerships with another regional health foundation concluded: the HPV Vaccine Initiative and Project Ready Smile.

Project Ready Smile

In 2006, REACH convened oral health leaders, dentists, hygienists and educators to design a program to improve the oral health of young children. That program, named Project Ready Smile, targeted children ages birth to six, with a goal of eliminating dental caries and improving overall oral health before kindergarten.

Project Ready Smile dental hygienists worked with 20 early childhood education and Head Start programs to screen children for oral problems, apply fluoride varnish and serve as care coordi-

ners to connect children with dental services reimbursed through the initiative at Medicaid rates. The project was managed by REACH with clinical supervision from the University of Missouri-Kansas City School of Dentistry and financial support from the Health Care Foundation of Greater Kansas City.

Over three years, Project Ready Smile served 2,070 children and performed 3,776 oral screenings. While the primary focus was on identification and early treatment of tooth decay, the initiative

also emphasized oral health education for parents. Surveys conducted as part of the evaluation found parent knowledge about oral health increased over time as a result of the educational efforts.

Two nonprofit organizations, a multi-site federally qualified health center and a Head Start coordinating agency, assumed responsibility for the project at the end of 2010. REACH awarded the organizations grants to support continuation of the project.

HPV Vaccine Initiative

In 2007, the REACH Foundation and the Health Care Foundation of Greater Kansas City (HCF) partnered on an initiative to provide the human papillomavirus (HPV) vaccine free to uninsured and underinsured girls and young women. The initiative involved two coordinating agencies and more than 30 public health departments and community health centers. The health centers included federally qualified health centers, clinics with a special population focus, free health clinics, and rural, suburban and urban clinics.

REACH and HCF funded the work of the coordinating agencies, the vaccine doses, an evaluation, and marketing and

other outreach activities aimed primarily at females ages 19 to 26. Program officers at REACH and HCF worked closely with the coordinating agencies and health centers to incorporate the vaccine into their clinical practices and ensure patients completed the three-dose vaccine series. Special emphasis also was directed toward increasing participation among African American and Hispanic teens and young adults.

The results surpassed the target of reaching 5,000 girls and young women:

- More than 10,000 females were vaccinated.
- More than 44,000 vaccines were

administered; 16,240 were provided with the foundations' financial support.

- Hispanic females comprised nearly 26% of vaccine recipients.
- More than half of females who completed the series received all three vaccines through the initiative.

The foundations concluded the initiative in December 2010, but health departments continue to offer the vaccine through federal vaccine programs and other patient assistance programs.

Medical Home Initiative

The Medical Home Initiative has been steadily expanding since 2007 with nine safety net clinics working to implement the medical home model using the National Committee for Quality Assurance (NCQA) Patient-Centered Medical Home standards as a guide. A technical assistance team from Qualis Health and its subsidiary, Outlook Associates, provided individualized and group guidance on meeting standards. Training and technical assistance in 2010 focused on nurse leadership and the role of nurse managers in building the clinical team and formalizing quality improvements. Additional assistance was provided to four clinics to prepare applications for NCQA medical home recognition.

Kansas Dental Project

The Kansas Dental Project was established in 2010 to conduct research, policy development and grassroots organizing to address oral health access issues in rural areas and other underserved communities in the state. Kansas Action for Children coordinated the project in partnership with the Kansas Association for the Medically Underserved and Kansas Health Consumer Coalition. Efforts included data collection, exploration of alternative workforce models and educational activities. REACH joined two Kansas health foundations and the W.K. Kellogg Foundation to provide funds for the project.

Head Start-Trauma Smart

REACH provided a three-year matching grant in 2009 for a Robert Wood Johnson Foundation Local Funding Partners grant, to expand Head Start-Trauma Smart, a Crittenton Children's Center program that provides on-site mental health therapy for children in Head Start centers who've experienced complex trauma. The project originally began with 14 Head Start centers in Kansas City, Kansas. In 2010, the project expanded to two early childhood programs in Kansas City, Missouri. REACH and other local funders provided matching funds for the program.



Through the Medical Home Initiative, Silver City Health Center staff have organized into interdisciplinary health care teams that coordinate all aspects of patient care.

Cultural Competency

The Cultural Competency initiative is a Foundation-led effort designed to increase understanding and practice of cultural competency in health and human service organizations, with a long-term goal of reducing health disparities. The initiative focuses on policies, practices and internal structures that influence cultural competence within organizations. REACH issued an application for organizational technical assistance in 2009 and announced the first recipients in 2010. Technical assistance got underway in spring, and a second application for technical assistance was issued in fall to select a second cohort of technical assistance recipients for 2011. REACH staff also presented the initiative to funders and at diversity conferences regionally and nationally. The Health Care Foundation of Greater Kansas City joined the initiative in fall 2010, expanding the number and type of organizations involved.

Kansas Health Reform Planning & Implementation

REACH supported a legal, policy and actuarial analysis of implementation

of the Affordable Care Act in Kansas. The grant to the Kansas Health Policy Authority contributed to the agency's planning efforts to prepare for redesigned Medicaid enrollment processes and benefit packages to meet the needs of an expanded Medicaid population. REACH partnered with four Kansas health foundations on the grant.

Regional Health Care Initiative

Since 2007, REACH has supported a Regional Health Care Initiative administered by the Mid-America Regional Council (MARC) that brings together safety net and mental health organizations to address access issues, gaps in service and quality improvement needs in the bi-state metropolitan region. In 2010, the initiative included year 2 of an After-Hours Expansion project to offer evening and weekend hours at selected safety net clinics and conducted strategic planning to pinpoint needs in the safety net system, such as specialty care. The Mental Health Stakeholders is developing goals for children's behavioral health services and addressing patient-centered health home standards.

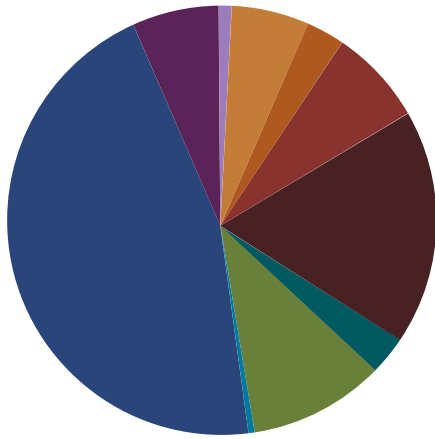


Grants

Total Grants Awarded

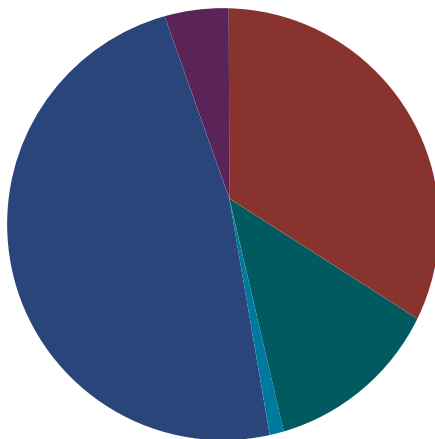
\$4,972,961

Type of Support



	Amount	Percentage	Grants
Advocacy/Public Policy	\$35,052	0.70%	3
Capacity	\$286,571	5.76%	10
CEO Discretionary	\$137,200	2.76%	12
Core Operating - Advocacy	\$350,000	7.04%	4
Core Operating	\$872,067	17.54%	11
Funded Initiative	\$150,000	3.02%	1
Joint Venture	\$532,173	10.70%	6
Matching Gifts	\$4,916	0.10%	10
Program	\$2,281,592	45.88%	27
Solicited Grant	\$323,390	6.50%	5
	\$4,972,961	100.00%	89

Funding Priority



	Amount	Percentage	Grants
Mental Health	\$1,690,289	33.99%	22
Oral Health	\$620,845	12.48%	12
Other	\$38,916	0.78%	15
Safety Net Services	\$2,366,941	47.60%	33
Systemic	\$255,970	5.15%	7
	\$4,972,961	100.00%	89

Grant RECIPIENTS

In 2010, the REACH Foundation awarded \$4,972,961 in grants in the categories of Mental Health, Oral Health, Safety Net Health Services, Systemic Grants and Other Foundation Grants.

MENTAL HEALTH

Organization Name	Project Description	Amount	Category
The Children's Place	Support personnel and clinical services costs in organization's Outpatient and Day Treatment programs for children ages six months to six years who have been victims of neglect, trauma and/or abuse.	\$79,230	Program
Comprehensive Mental Health Services, Inc.	Convert paper medical records to electronic records system.	\$30,000	Capacity
Comprehensive Mental Health Services, Inc.	Core operating support for community mental health center that provides a full range of mental health services to 6,000 clients a year.	\$100,000	Core Operating
DeLaSalle Education Center	Provide on-site mental health services to 75 low income, underserved students in an alternative school setting.	\$71,352	Program
Hope House, Inc.	Provide assessment, diagnosis and mental health advocacy/navigation via a LCSW for severely mentally ill shelter clients and provide long-term therapy for adult and child outpatient clients.	\$119,943	Program
Kansas City Free Health Clinic	Provide psychiatric services to 250 patients by contracting with a psychiatrist and employing a part-time psychiatric nurse practitioner.	\$67,440	Program
KU Endowment on behalf of KU School of Social Welfare	Support personnel expense for a promotora at Argentine Middle School to identify mental health needs and connect students to services.	\$32,888	Program
KVC Health Systems, Inc.	Provide in-home individual and family therapy for uninsured families referred by the Independence School District for family intervention.	\$41,115	Program
Mattie Rhodes Center	Expand bilingual therapy program for 200 Spanish-speaking children and adults at Argentine Middle School, Argentine Community Center and Silver City Health Clinic in Kansas City, KS.	\$114,812	Program
National Alliance on Mental Illness of Greater Kansas City	Hire a community support assistant to aid in identification of mental illness and referral to services for individuals and families experiencing a mental health crisis.	\$108,578	Program
National Alliance on Mental Illness of Greater Kansas City	Contract with a communications consultant to strengthen understanding of organization's mission and services, and redesign organization's web site to improve its utility as a tool for communication and consumer engagement.	\$29,450	Capacity
Niles Home for Children	Continue on-site mental health therapy for 150 children ages 7-17 in the residential and day treatment programs.	\$125,000	Program
Reconciliation Services	Expand current mental health program by supporting three part-time therapists to provide long-term therapy for residential clients.	\$58,350	Program
ReDiscover	Renewal of core operating support for clinical and medical director positions for a community mental health center that serves more than 8,000 individuals each year.	\$100,000	Core Operating
ReDiscover	Support clinical staff that provide psychiatric care to uninsured consumers until a payor source is identified.	\$124,920	Program
Rose Brooks Center, Inc.	Provide mental health therapy to 300 adults and 80 children who are victims of domestic violence.	\$84,269	Program
Safehome, Inc.	Expand access to mental health services by supporting a full-time bilingual therapist and contracting for psychiatric services.	\$61,875	Program
Sheffield Place	Provide mental health services to 25-45 children and their mothers in long-term shelter care.	\$56,026	Program
TLC for Children and Families, Inc.	Hire consulting firm to transform organization's telephone system to an integrated communications platform that can better meet the needs of clients.	\$29,919	Capacity
TLC for Children and Families, Inc.	Provide intensive psychiatric care for 25 severely abused, neglected and psychiatrically challenged youth in Kansas.	\$117,572	Program
Tri-County Mental Health Services, Inc.	Support psychiatric evaluation, medication checks, and nursing support for low-income and uninsured clients.	\$107,950	Program
Wyandot Center for Community Behavioral Healthcare	Develop technology to more effectively use data within the organization's electronic medical record to track and improve service delivery and implementation of the organization's strategic plan.	\$29,600	Capacity

Total Mental Health Grants..... \$1,690,289

ORAL HEALTH

Organization Name	Project Description	Amount	Category
Kansas Action for Children	Access expertise for engaging consumers in identifying service gaps and other oral health access issues, and exploring alternative workforce models that offer potential solutions.	\$20,000	Joint Venture
Kansas Association for the Medically Underserved	Contract with an Extended Care Permit hygienist to serve as project staff for a children's oral health initiative operated by Kansas Head Start Association.	\$8,000	Solicited Grant
Kansas Head Start Association	Purchase oral health supplies for oral health screens provided by an Extended Care Permit dental hygienist.	\$4,000	Solicited Grant
Oral Health Kansas, Inc.	Renewal of core operating support for an oral health coalition that advocates for state funding for oral health services and assists in development of a statewide oral health plan.	\$100,000	Core Operating - Advocacy
Oral Health Kansas, Inc.	Support expenses associated with the annual Oral Health Kansas Conference.	\$5,000	CEO Discretionary
Oral Health Kansas, Inc.	Support for fifth year of the Dental Champions Leadership Program.	\$28,200	CEO Discretionary
Research Belton Foundation on behalf of Cass County Oral Health Coalition	Contract with consultant to assist community task force with establishing a dental clinic in Cass County, Missouri, that will serve Medicaid and other low-income populations.	\$21,000	Capacity
Research Foundation	Provide salary expenses for newly established dental clinic in Cass County that expects to serve 1,500 children in 2011.	\$125,000	Program
Samuel U. Rodgers Health Center, Inc.	Purchase oral health supplies to be used for children's oral health screens and support coordination of dental treatment.	\$4,000	Solicited Grant
StandUp Blue Springs, Inc.	Provide preventative, restorative and emergency oral health services to 230 low-income children in the Blue Springs, Missouri, School District, as well as placing them in a dental home.	\$74,493	Program
University of Missouri-Kansas City (Miles of Smiles)	Provide preventive oral and restorative care and teledentistry to 673 children in Olathe School District Title I elementary schools.	\$110,152	Program

Total Oral Health Grants..... \$620,845*

OTHER GRANTS

Organization Name	Project Description	Amount	Category
Employee Matching Gifts	Employee matching gifts to eligible organizations.	\$4,916	Matching Gifts
Grantmakers In Health	Contribution to Grantmakers in Health's Health Reform Resource Center Fund to assist foundations supporting work related to implementation of national health reform.	\$20,000	CEO Discretionary
Greater Kansas City Hispanic Collaborative	Support seminar series that prepares emerging leaders for effective service on nonprofit and public service boards, commissions, and task forces.	\$3,000	CEO Discretionary
Kansas Association for the Medically Underserved	Charitable contribution in honor of retired employee.	\$5,000	CEO Discretionary
Nonprofit Connect: Network. Learn. Grow.	Support implementation of new membership program to expand access to professional development for nonprofit professionals and volunteers.	\$5,000	CEO Discretionary
Support Kansas City, Inc.	Sponsor of 'Excellence in Nonprofit Leadership' award.	\$1,000	CEO Discretionary

Total Other Grants..... \$38,916

**Includes a \$121,000 program grant that was awarded but subsequently rescinded by the Foundation Board.*

Grant RECIPIENTS

SAFETY NET SERVICES GRANTS

Organization Name	Project Description	Amount	Category
Cabot Westside Health Center	Expand hours of operation for safety net clinic that serves 7,900 predominantly Spanish-speaking patients.	\$81,363	Program
Communities Creating Opportunity	Expand engagement and mobilization of faith leaders in Johnson and Wyandotte counties to sustain the Faith-Based Health Care Advocacy Coalition established in 2009.	\$60,051	Program
Cornerstones of Care	Purchase a Storage Area Network (SAN) device to support the electronic health record (EHR) system and future electronic medical record (EMR) interface.	\$26,649	Capacity
Duchesne Clinic	Renewal of core operating support to provide primary health care services, specialist referral management, and medical translation services to poor and uninsured residents in Wyandotte County, KS, to a clinic that serves 1,700 patients for more than 11,500 visits a year.	\$100,000	Core Operating
Health Partnership Clinic of Johnson County	Renewal of core operating support for safety net clinic that saw 3,100 patients in 10,000 visits in 2009.	\$100,000	Core Operating
Health Partnership Clinic of Johnson County	Relocate safety net clinic's Olathe satellite clinic to a new facility to allow for approximately 4,000 additional medical visits and 1,000 additional dental visits per year.	\$29,962	Capacity
Heart To Heart International, Inc.	Provide medicine and medical products to 6-10 clinics and safety net organizations in the Kansas City community that serve uninsured patients.	\$87,630	Program
Institute for International Medicine	Sponsor 2010 Cross-Cultural Competency in Healthcare Symposium, a Kansas City event that equips health care students, professionals and community leaders to deliver health services to culturally diverse populations in the Greater Kansas City area.	\$10,000	CEO Discretionary
Kansas Association for the Medically Underserved	Renewal of core operating support for statewide primary care advocacy organization whose 40 members include federally qualified health centers, federally qualified health center look-alikes, and state-supported primary care clinics.	\$100,000	Core Operating - Advocacy
Kansas Association for the Medically Underserved	Advocate to Kansas lawmakers about the value of safety net health clinics and importance of adequate funding of safety net services through a postcard campaign.	\$4,082	Advocacy/ Public Policy
Kansas Association for the Medically Underserved	Support 2010 Annual Primary Care Conference.	\$5,000	CEO Discretionary
Kansas City Free Health Clinic	Renewal of core operating support for primary medical care, with a focus on patients with chronic diseases.	\$50,000	Core Operating
KU Endowment on behalf of JayDoc Free Clinic	Renewal of core operating support to provide primary medical care in a free clinic managed and operated by medical students from the University of Kansas School of Medicine.	\$35,567	Core Operating
KU Endowment on behalf of Project EAGLE	Provide medical services onsite to Project EAGLE preschool children via a full time nurse practitioner under the supervision of physicians at KUMC, ensuring that pregnant women and children enrolled in Project EAGLE receive early and continuous health care, making referrals to community clinics and conducting home visits as needed.	\$89,600	Program
KU Endowment on behalf of Project EAGLE	Establish health clinic in Children's Campus building, including purchase of equipment, recruitment of nurse practitioner/clinic manager and development of clinical practice protocols.	\$30,000	Capacity
KU Endowment on behalf of Silver City Health Center	Implement a hypertension program to address health outcomes for 460 patients with high blood pressure.	\$26,510	Program
KU Endowment on behalf of Silver City Health Center	Renewal of core operating support for a nurse-led safety net clinic in Wyandotte County to provide primary care, health education and health prevention services to uninsured and underinsured populations.	\$100,000	Core Operating
MetroCARE of Greater Kansas City	Operate a referral network that connects low-income, uninsured residents of the Greater Kansas City, Missouri, area to donated specialty medical care.	\$45,200	Program
Mid-America Regional Council Community Services Corporation	Renewal of support for the Regional Health Care Initiative, a project of Mid-America Regional Council, intended to effect system change with respect to health care delivery, coordination and policy.	\$150,000	Funded Initiative
Mid-America Regional Council Community Services Corporation	Support for after-hours primary care in five safety net clinics in the bi-state metropolitan area.	\$200,000	Joint Venture
Missouri Coalition For Primary Health Care dba Missouri Primary Care Association	Core operating support to expand the capacity of the Patient-Centered Health Home Team, with a goal of preparing Missouri's federally qualified health centers for medical home recognition.	\$50,000	Core Operating - Advocacy

SAFETY NET SERVICES GRANTS

Organization Name	Project Description	Amount	Category
Qualis Health	Continuation of technical assistance for nine safety net clinics engaged in the REACH Foundation Medical Home Initiative.	\$300,000	Solicited Grant
Qualis Health	Access to technical assistance to assist four safety net clinics in preparing applications for Patient-Centered Medical Home recognition by the National Committee on Quality Assurance.	\$7,390	Solicited Grant
Riverview Health Services, Inc.	Contract with consulting groups to strengthen organization's capacity to accommodate demand for services and consumer responsiveness in a more effective manner.	\$30,000	Capacity
Samuel U. Rodgers Health Center, Inc.	Core operating support to complete conversion to an electronic medical records system, including purchase of computers and other needed equipment.	\$100,000	Core Operating
Synergy Services, Inc.	Support for personnel expense for medical case manager, supplies and contract provider for on-site medical/dental clinic in organization's newly-opened Youth Resiliency Center.	\$89,273	Program
Thrive Allen County, Inc.	Renewal of core operating support with a focus on implementing a countywide health action plan, recruiting medical/dental providers and advocating for community health projects.	\$100,000	Core Operating - Advocacy
Truman Heartland Community Foundation obo Jackson County Free Health Clinic	Renewal of core operating support to hire a medical director to support clinic operations and add daytime medical appointments in addition to the clinic's traditional evening appointments.	\$58,000	Core Operating
Turner House Children's Clinic	Renewal of core operating support for Wyandotte County, Kansas, pediatric clinic that provides primary medical care for 4,000 patients in 10,000 patient visits annually.	\$100,000	Core Operating
United Way of Greater Kansas City	Matching funds for Robert Wood Johnson Local Funding Partners award to the Citizen Assist Program, connecting 911 callers with non-emergency needs to community resources.	\$112,173	Joint Venture
United Way of Greater Kansas City	Support for the United for Hope/United to Help Campaign community fund that provides emergency assistance.	\$30,000	CEO Discretionary
University of Missouri-Kansas City on behalf of Sojourner Safety Net Clinic	Renewal of core operating support for a free, student-run primary care clinic for the homeless and indigent population of downtown Kansas City, Missouri.	\$28,500	Core Operating

Total Safety Net Grants..... \$2,366,941*

SYSTEMIC GRANTS

Communities Creating Opportunity	Engage clergy and grassroots leaders to advocate for state expansion of CHIP and simplification of the enrollment process for Missouri's children.	\$1,220	Advocacy/ Public Policy
Kansas Health Policy Authority	Develop streamlined Medicaid eligibility rules and enrollment process, and design benefit packages for an expanded Medicaid population to achieve compliance with Affordable Care Act provisions.	\$50,000	Joint Venture
Mid-America Regional Council Community Services Corporation	Perform an analysis of health care and health conditions data for the population residing in the REACH Foundation service area.	\$20,000	CEO Discretionary
Mid-America Regional Council Community Services Corporation	Build the technology infrastructure that will connect safety net and other health care providers, and enable electronic exchange of health information across organizations.	\$100,000	Joint Venture
Mid-America Regional Council Community Services Corporation	Engage staff of the Mid-America Regional Council to conduct presentations on a regional health assessment report and county profiles prepared for REACH.	\$5,000	CEO Discretionary
The Missouri Budget Project	Hire a public engagement and media training consultant to develop a coalition with a specific focus on Missouri revenue options and tax policy.	\$29,750	Advocacy/ Public Policy
Topeka Community Foundation	Establish with four regional health foundations a funding pool to support implementation of the provisions of the Affordable Care Act.	\$50,000	Joint Venture

Total Systemic Grants..... \$255,970

**Includes a \$29,991 capacity grant that was awarded but subsequently returned to the Foundation.*



Financial

S U M M A R Y

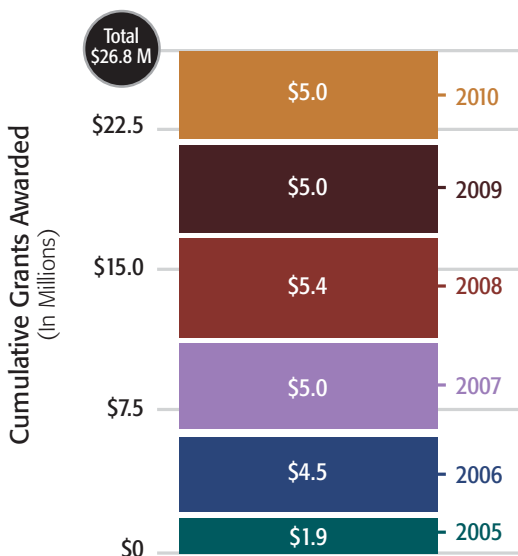
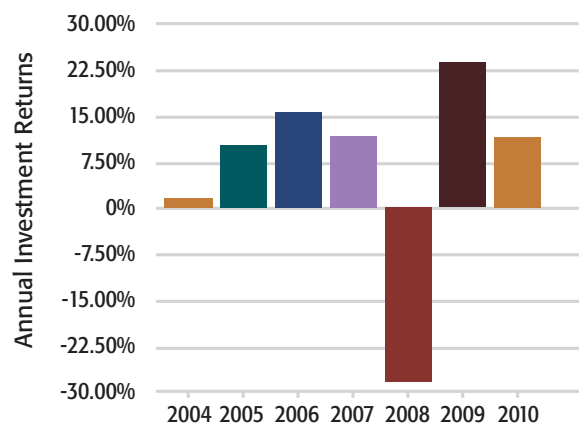
The bylaws establishing the REACH Healthcare Foundation mandate a perspective of perpetuity.

The Foundation's investment and spending policies have guided the organization during its early life cycle and through turbulent economic times with a continual focus on quality and longevity. Our purpose is, and will always be, to aid the underserved in our area with consistent levels of grantmaking to quality organizations. With sound policy fundamentals and thoughtful implementation, the Foundation is positioned well to achieve this task, both now and for the future.

Timothy Michel
Treasurer

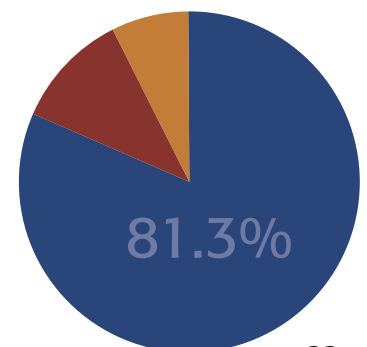
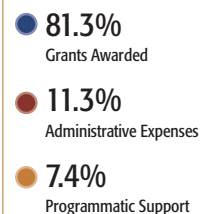
Investments

Since the Foundation's inception in 2004, assets have increased from \$99.4 million to \$125.2 million. During the same period, \$26.8 million has been awarded in grants. Impacted by investment returns, contributions, grants and operating expenditures, the Foundation's assets increased in value from \$111.9 million to \$125.2 million from December 31, 2009, to December 31, 2010. During 2010, the investment return of the Foundation's portfolio was 11.4%. Investment performance benefited mainly from returns in U.S. equities and inflation hedging assets. The Foundation, now entering its eighth year of operations, will make appropriate adjustments in asset allocation to achieve long-term results consistent with other foundations of similar size and age.



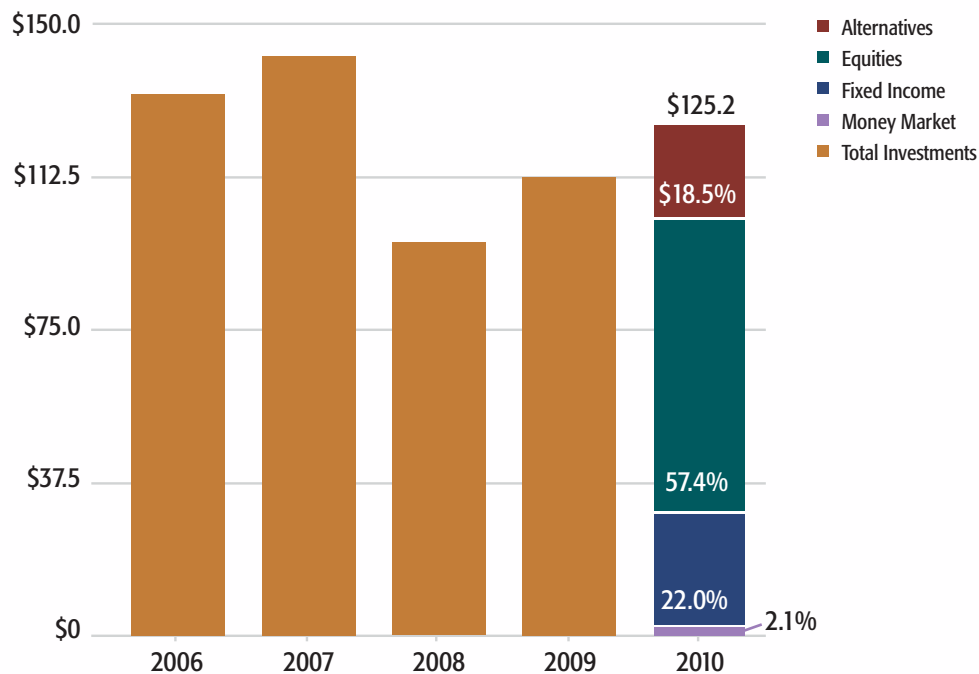
Grants and Expenses

More than 81 percent of the Foundation's 2010 total expenditures are related to grants awarded during the year. This compares favorably to foundations of similar size. The charts presented show our grantmaking in relation to other spending and cumulative grant awards. Although the Foundation strives for consistent levels of grantmaking each year, the annual volume is dependent upon the Foundation's ability to invest assets prudently.



Investments

For the years 2006-2010, In Millions



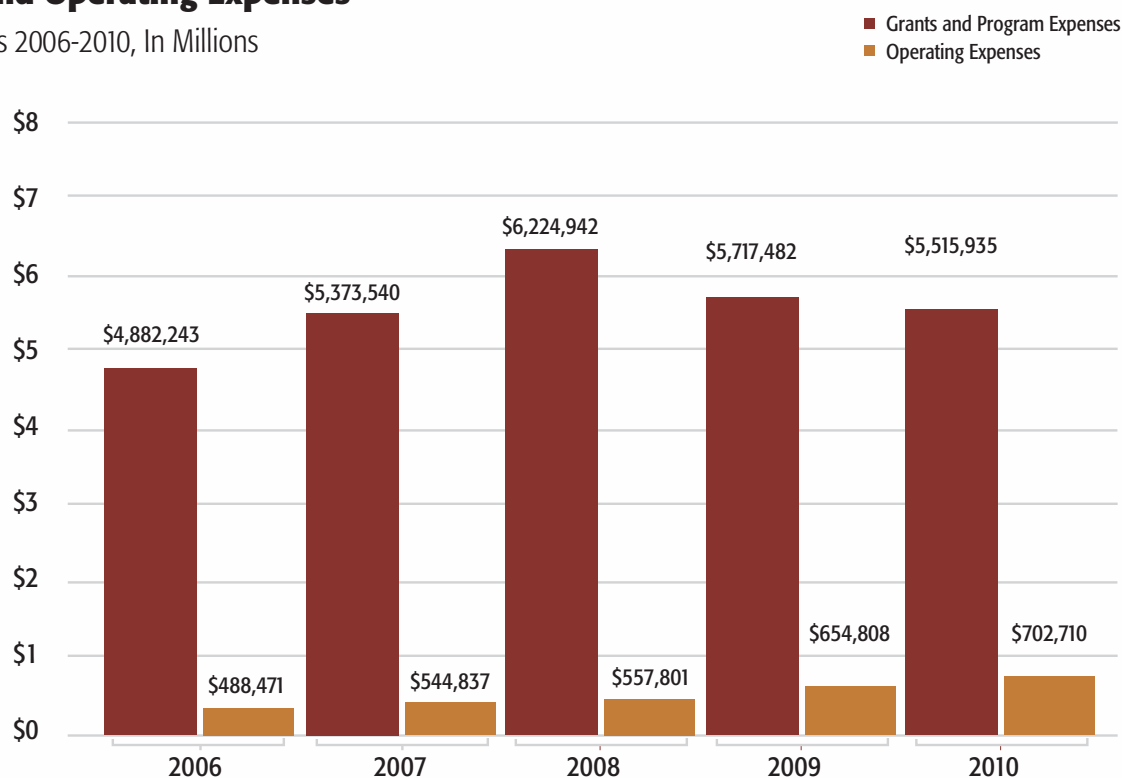
Financial Position

December 31, 2010 and 2009

	2010	2009
Assets		
Cash	83,615	239,402
Receivables and other assets	40,700	63,637
Investments	125,185,946	111,949,344
Fixed assets, net	152,635	214,032
Total assets	<u>125,462,896</u>	<u>112,466,415</u>
Liabilities and Net Assets		
Liabilities		
Accounts payable and accrued expenses	129,119	139,421
Grants payable	2,889,006	3,226,505
Total liabilities	3,018,125	3,365,926
Net assets	122,444,771	109,100,489
Total net assets	<u>122,444,771</u>	<u>109,100,489</u>
Total liabilities and net assets	<u>125,462,896</u>	<u>112,466,415</u>

Grants and Operating Expenses

For the years 2006-2010, In Millions



Activities and Changes in Net Assets

Years ended December 31, 2010 and 2009

	2010	2009
Revenues, gains and other support		
Contributions	6,780,000	10,000
Investment income (loss), net	12,782,927	22,005,071
Total revenue, gains and other support	19,562,927	22,015,071
Expenses		
Grants and program expenses	5,515,935	5,717,482
Operating expenses	702,710	654,808
Total grants and operating expenses	6,218,645	6,372,290
Change in net assets	13,344,282	15,642,781
Net assets, beginning of year	109,100,489	93,457,708
Net assets, end of year	122,444,771	109,100,489

The financial statements presented in this publication are unaudited. Our full audited financial statements and auditor's opinion prepared by BKD, LLP, will be available on the Foundation's web site upon completion.

Leadership

Board of Directors

Scott Glasrud, *Chair*

William Bruning, *Vice Chair*

Timothy Michel, *Treasurer*

Heidi Cashman, *Secretary*

Janie Schumaker, *Grants Committee Chair*

Brenda Bohaty, *At-Large Member*

Karen Gilpin, *At-Large Member*

Brenda Sharpe, *President and CEO*

Stanley Brand

Zeny Bustillo-Schmidt

Pam Chapin

Linda Clarkson

Kenneth Davis

Kumar Ethirajan

Joshua Freeman

Frank Friedman

Harold Johnson, Jr.

Randy Lopez

Eve McGee

Anita Metoyer

Chad Moore

Thomas Robinett, Jr.

Glen Singer

Brad Stratton

Judy Works



Front row from left: Scott Glasrud, Judy Works, Eve McGee, Timothy Michel; Second row from left: Harold Johnson, Jr., Brenda Bohaty, Heidi Cashman, Karen Gilpin, Pam Chapin, Randy Lopez, Brenda Sharpe; Back row from left: Brad Stratton, Anita Metoyer, Chad Moore, William Bruning, Kenneth Davis.

Community Advisory Committee

Michael Belzer, *Chair*
Andrew Klocke, *Vice Chair*
Nancy Maier, *Secretary*

Dana Abraham
Patricia Caruthers
Jeffery Dysart
Evie Hagerman
Michelle Haley
Denny Kurogi
Melinda Lewis
Jon Marshall
Christie McReynolds
John David Rios
Steve Scherer
Brad Stratton
Cecelia Ysaac-Belmares



Front: Mike Belzer, Nancy Maier, Patricia Caruthers; Back: Jon Marshall, Jeffery Dysart, Andrew Klocke, Melinda Lewis, Christie McReynolds, Michelle Haley, Denny Kurogi, Brenda Sharpe, Steven Scherer.

Foundation Staff

Brenda Sharpe, *President and CEO*
Becky Benak, *Grants and Operations Manager*
Dawn Downes, *Program Officer and Project Director, Project Ready Smile*
Jo Yun, *Vice President of Finance and Operations, Chief Financial Officer*
Carla Gibson, *Senior Program Officer*
Pattie Mansur, *Communications Director*
Karen Moore, *Administrative Assistant*



Front: Carla Gibson, Brenda Sharpe, Jo Yun; Back: Pattie Mansur, Becky Benak, Dawn Downes.



6700 Antioch Road, Suite 200 • Merriam, Kansas 66204

info@reachhealth.org • Phone: (913) 432-4196 • Toll-free: (866) 866-8805 • Fax: (913) 789-6432

www.reachhealth.org